

**Mitchell County, Iowa**  
Iowa North Zone (1401)  
Horiz. Datum: NAD83(1996)  
Vert. Datum: NAVD 1988  
US Survey Feet  
**2006**

Point Name: **114**

**Designation:** G158 Cerro Gordo Co GPS Control Monument (Set by WHKS in 2002)

Northing: **3920931.83**sft Easting: **5046664.79**sft

Orthometric Height: **1221.29**sft Ellipsoid Height: **1125.56**sft **Geoid03**

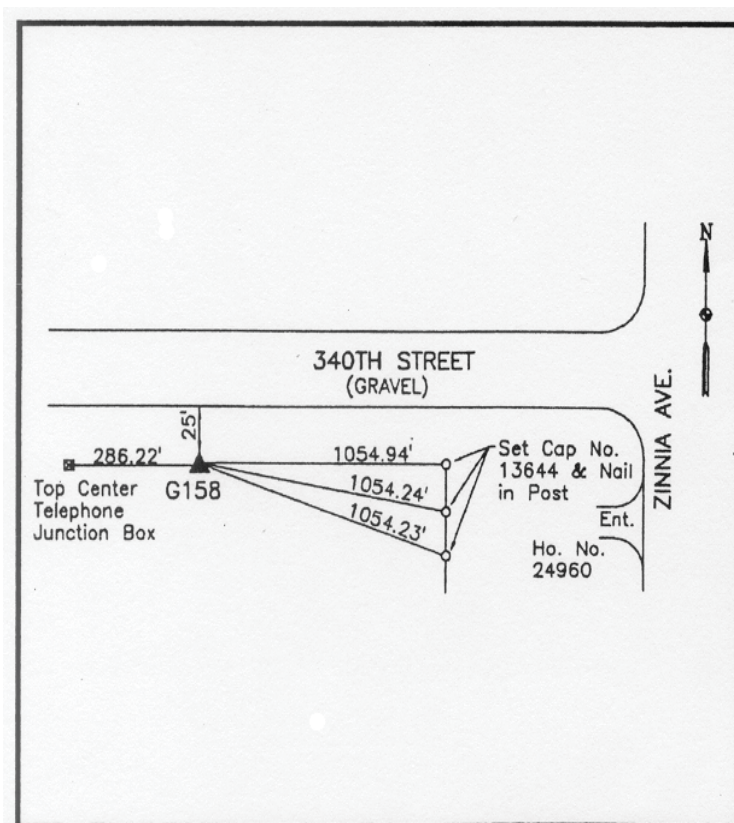
Latitude: **43°15'19.62287"N**

Longitude: **93°01'45.26590"W**

Mapping Angle: **0°19'09"**

Combination Scale Factor: **0.99994427**

**Monument Type:** 5/8" x 6'-0" long aluminum rod with stamped cap and NGS style access cover.



**Description:**

Placed 5/8" X 6' - 0" Long  
Aluminum Rod with Cap  
Stamped G158 and NGS Style  
Access Cover 2" Deep.

**Location:**

South side 340th Street - 0.25±  
mile west of Zinnia Avenue -  
10'± east of a field entrance -  
near NE Corner Section 1-  
T97N-R19W.