

Mitchell County, Iowa
Iowa North Zone (1401)
Horiz. Datum: NAD83(1996)
Vert. Datum: NAVD 1988
US Survey Feet
2006

Point Name: **115**

Designation: 2000-301 Floyd Co GPS Control Point (Set by ASI in 2000)

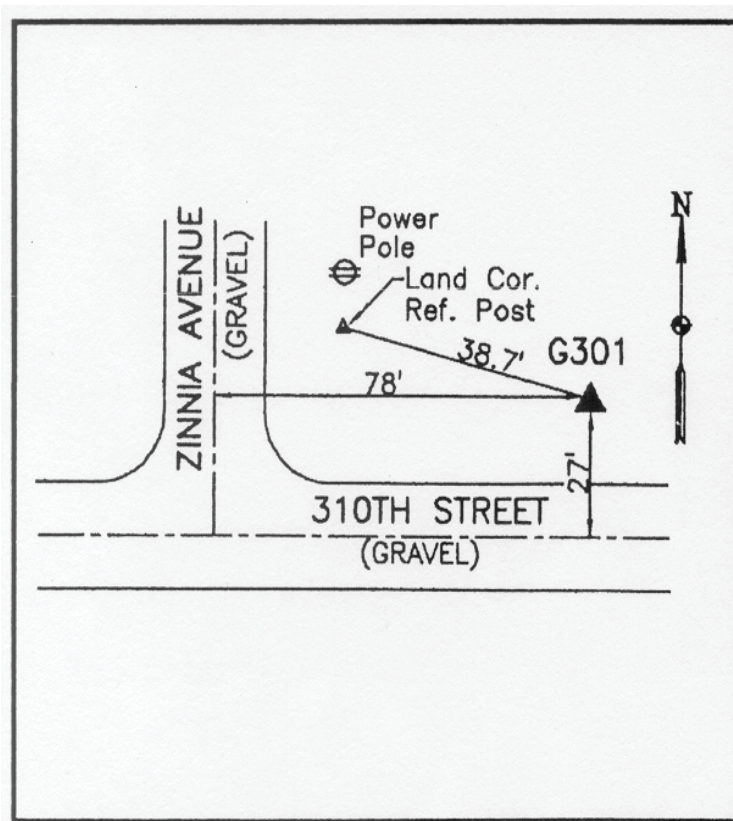
Northing: **3905426.08sft** Easting: **5048195.41sft**

Orthometric Height: **1157.06sft** Ellipsoid Height: **1060.92sft** **Geoid03**

Latitude: **43°12'46.39305"N** Longitude: **93°01'25.76320"W**

Mapping Angle: **0°19'22"** Combination Scale Factor: **0.99994000**

Monument Type: 5/8" dia driven aluminum rod with a 2-1/2" dia. aluminum cap and permanent magnet encased in a 5" dia. PVC pipe with aluminum access cover.



Description:

Found NGS Style Aluminum
Monument with Access Cover

Location:

80' east of Zinnia Avenue - 25'
north of Mitchell Line Street -
near the SW Corner of Section
18-T97N-R18W.

This document was prepared by DCI and GBC for use by Mitchell County, Iowa.