

Mitchell County, Iowa
Iowa North Zone (1401)
Horiz. Datum: NAD83(1996)
Vert. Datum: NAVD 1988
US Survey Feet
2006

Point Name: 116

Designation: 2000-309 Floyd Co GPS Control Point (Set by ASI in 2000)

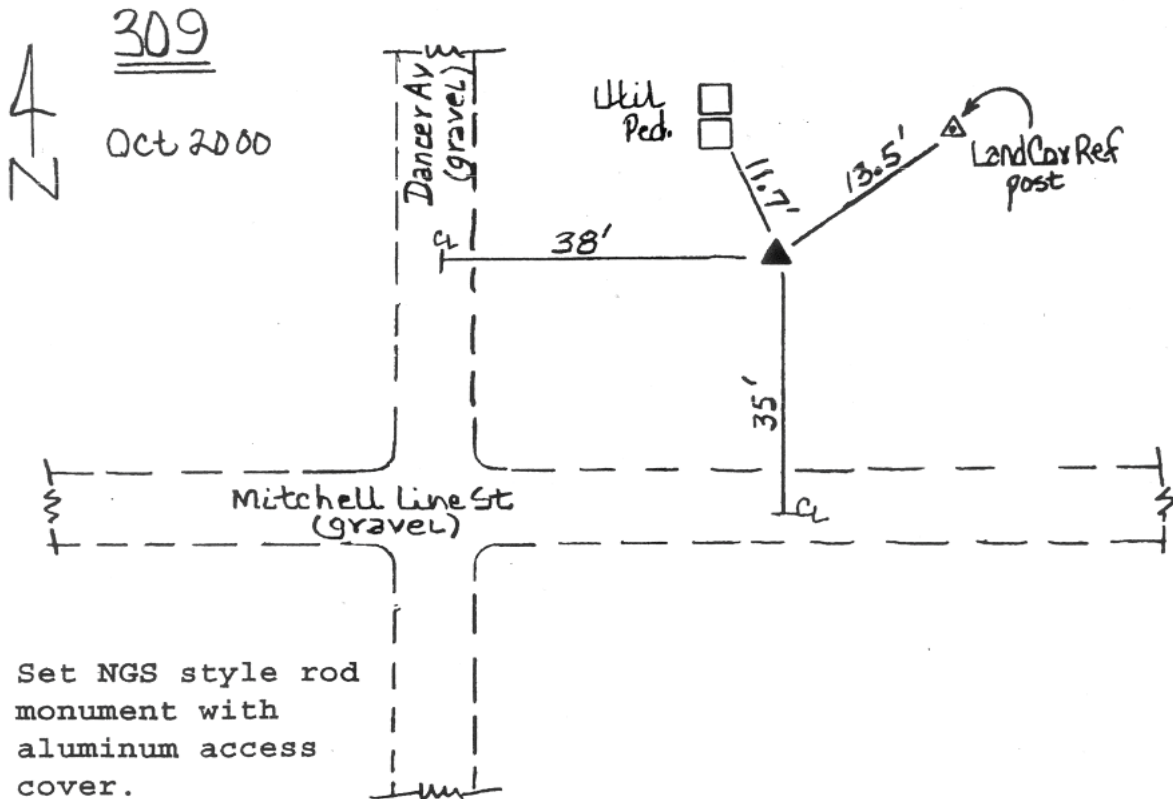
Northing: 3905448.77sft Easting: 5064037.96sft

Orthometric Height: 1194.47sft Ellipsoid Height: 1097.14sft Geoid03

Latitude: 43°12'45.68079"N Longitude: 92°57'51.83312"W

Mapping Angle: 0°21'47" Combination Scale Factor: 0.99993824

Monument Type: 5/8" dia driven aluminum rod with a 2-1/2" dia. aluminum cap and permanent magnet encased in a 5" dia. PVC pipe with aluminum access cover.



This document was prepared by DCI and GBC for use by Mitchell County, Iowa.