

Mitchell County, Iowa
Iowa North Zone (1401)
Horiz. Datum: NAD83(1996)
Vert. Datum: NAVD 1988
US Survey Feet
2006

Point Name: **118**

Designation: 2000-325 Floyd Co GPS Control Point (Set by ASI in 2000)

Northing: **3905674.85sft** Easting: **5094376.78sft**

Orthometric Height: **1071.95sft** Ellipsoid Height: **972.82sft** **Geoid03**

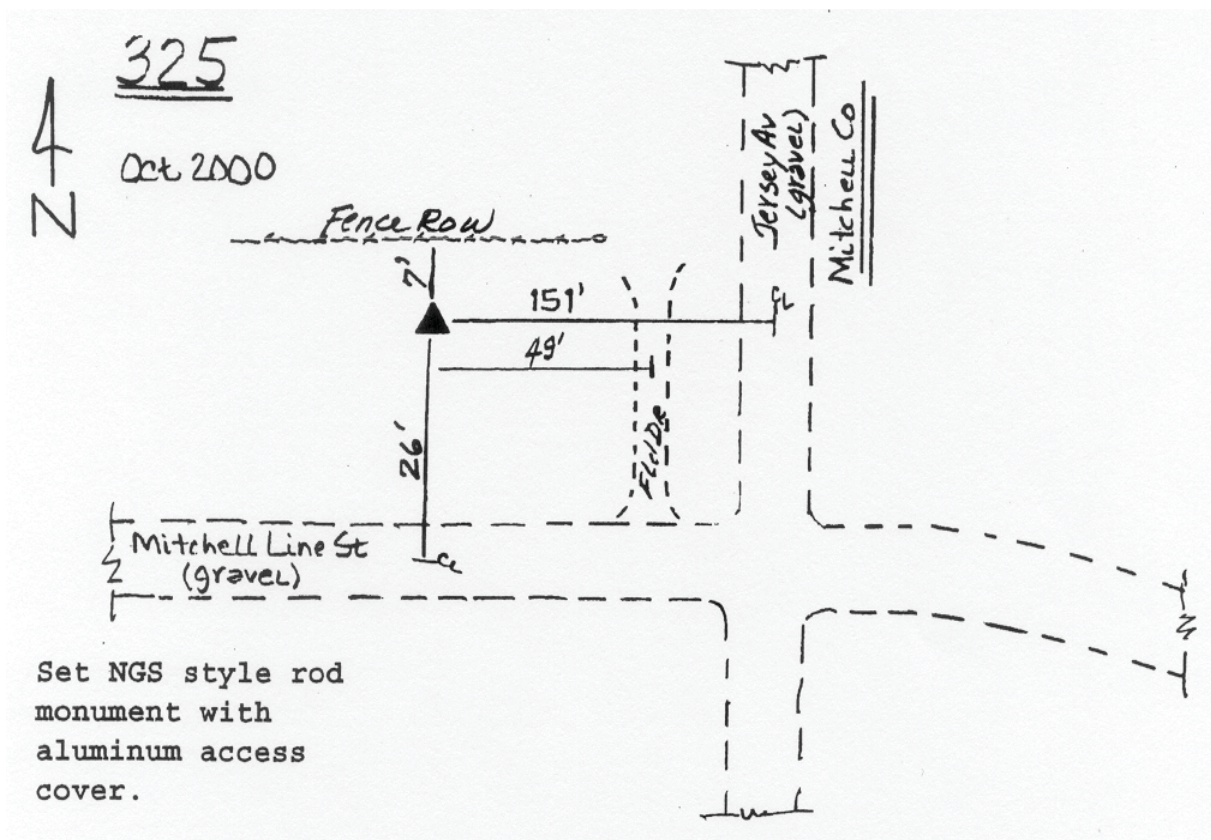
Latitude: **43°12'45.81356"N**

Longitude: **92°51'02.13781"W**

Mapping Angle: **0°26'24"**

Combination Scale Factor: **0.99994418**

Monument Type: 5/8" dia driven aluminum rod with a 2-1/2" dia. aluminum cap and permanent magnet encased in a 5" dia. PVC pipe with aluminum access cover.



This document was prepared by DCI and GBC for use by Mitchell County, Iowa.