

Mitchell County, Iowa
Iowa North Zone (1401)
Horiz. Datum: NAD83(1996)
Vert. Datum: NAVD 1988
US Survey Feet
2006

Point Name: **119**

Designation: 2000-333 Floyd Co GPS Control Point (Set by ASI in 2000)

Northing: **3906029.21sft** Easting: **5111332.81sft**

Orthometric Height: **1051.24sft** Ellipsoid Height: **951.33sft** **Geoid03**

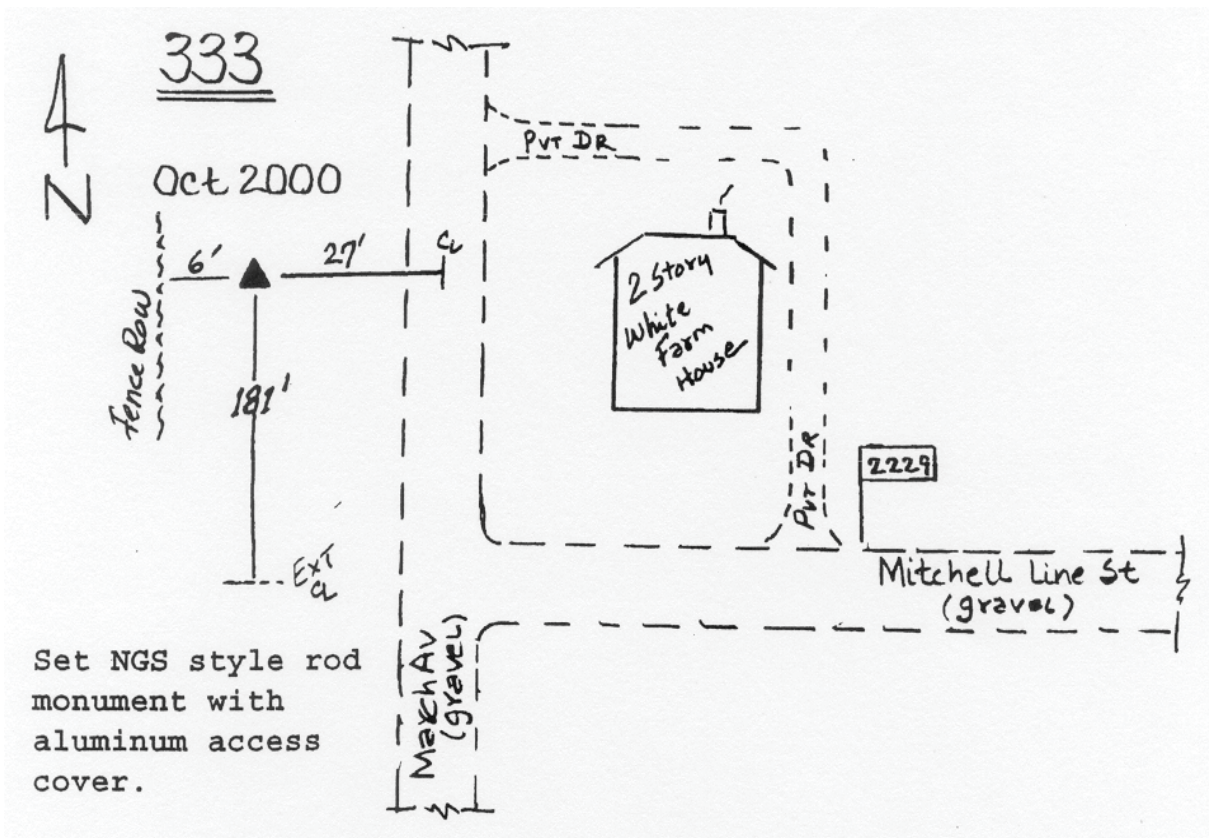
Latitude: **43°12'47.96394"N**

Longitude: **92°47'13.13770"W**

Mapping Angle: **0°29'00"**

Combination Scale Factor: **0.99994530**

Monument Type: 5/8" dia driven aluminum rod with a 2-1/2" dia. aluminum cap and permanent magnet encased in a 5" dia. PVC pipe with aluminum access cover.



This document was prepared by DCI and GBC for use by Mitchell County, Iowa.