

Mitchell County, Iowa
Iowa North Zone (1401)
Horiz. Datum: NAD83(1996)
Vert. Datum: NAVD 1988
US Survey Feet
2006

Point Name: 120

Designation: 2000-341 Floyd Co GPS Control Point (Set by ASI in 2000)

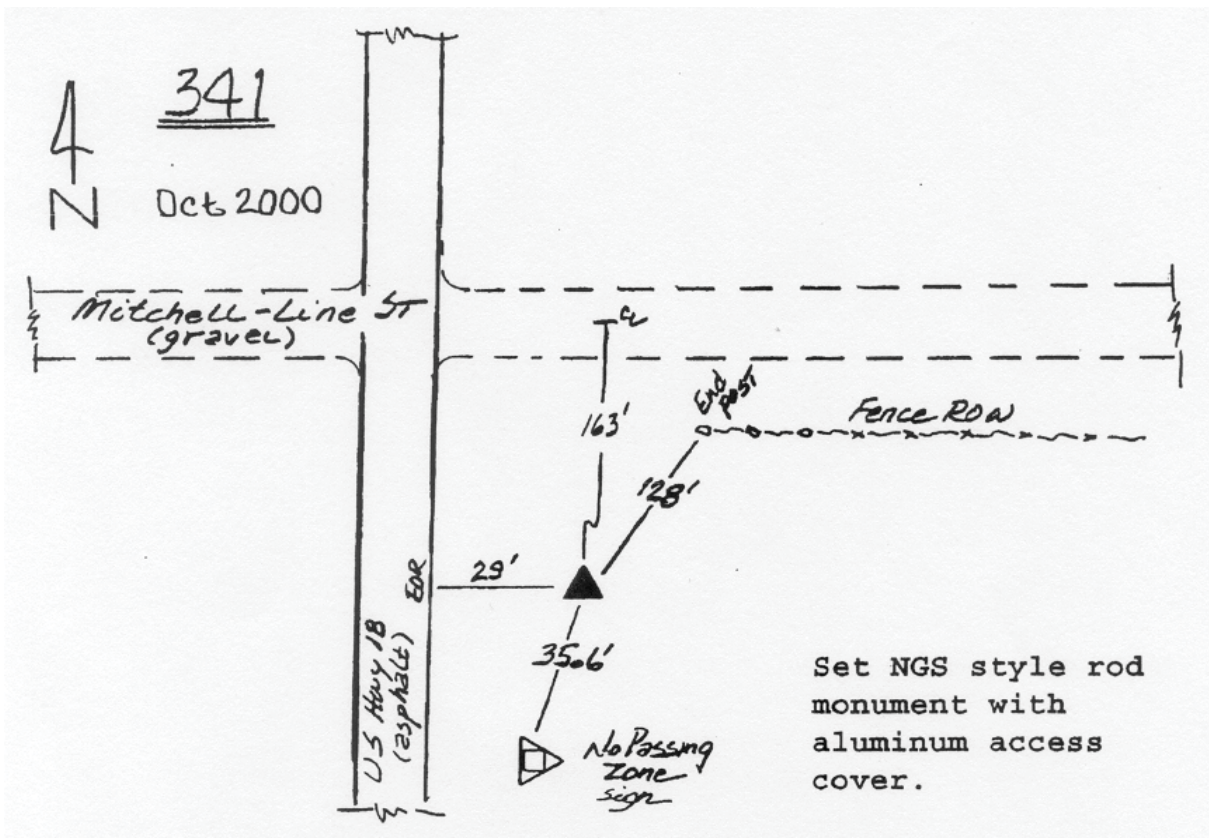
Northing: 3905770.92sft Easting: 5125944.55sft

Orthometric Height: 1111.40sft Ellipsoid Height: 1011.14sft Geoid03

Latitude: 43°12'44.14897"N Longitude: 92°43'55.86413"W

Mapping Angle: 0°31'13" Combination Scale Factor: 0.99994227

Monument Type: 5/8" dia driven aluminum rod with a 2-1/2" dia. aluminum cap and permanent magnet encased in a 5" dia. PVC pipe with aluminum access cover.



This document was prepared by DCI and GBC for use by Mitchell County, Iowa.