

Mitchell County, Iowa
Iowa North Zone (1401)
Horiz. Datum: NAD83(1996)
Vert. Datum: NAVD 1988
US Survey Feet
2006

Point Name: **121**

Designation: 2000-349 Floyd Co GPS Control Point (Set by ASI in 2000)

Northing: **3905972.89sft** Easting: **5141772.23sft**

Orthometric Height: **1080.25sft** Ellipsoid Height: **979.73sft** **Geoid03**

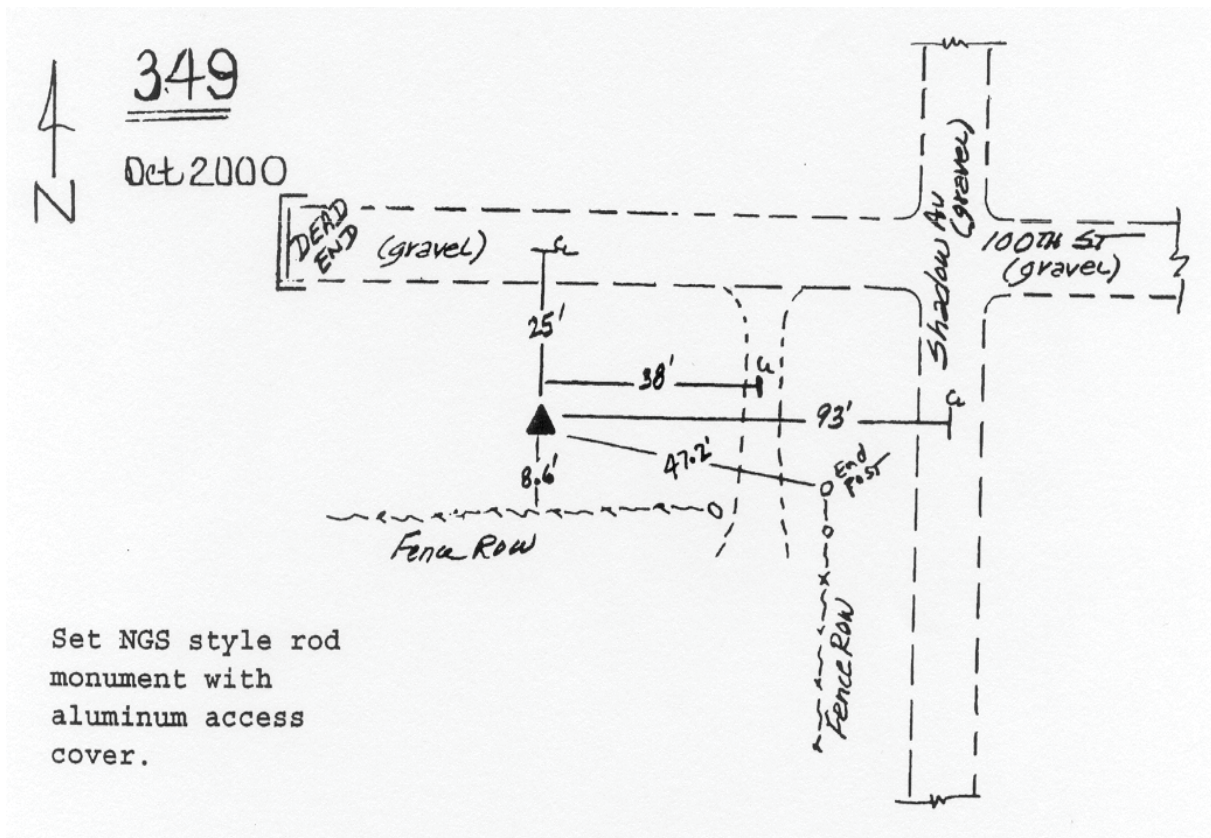
Latitude: **43°12'44.66900"N**

Longitude: **92°40'22.11819"W**

Mapping Angle: **0°33'38"**

Combination Scale Factor: **0.99994379**

Monument Type: 5/8" dia driven aluminum rod with a 2-1/2" dia. aluminum cap and permanent magnet encased in a 5" dia. PVC pipe with aluminum access cover.



This document was prepared by DCI and GBC for use by Mitchell County, Iowa.