

Mitchell County, Iowa
Iowa North Zone (1401)
Horiz. Datum: NAD83(1996)
Vert. Datum: NAVD 1988
US Survey Feet
2006

Point Name: **122**

Designation: 2000-357 Floyd Co GPS Control Point (Set by ASI in 2000)

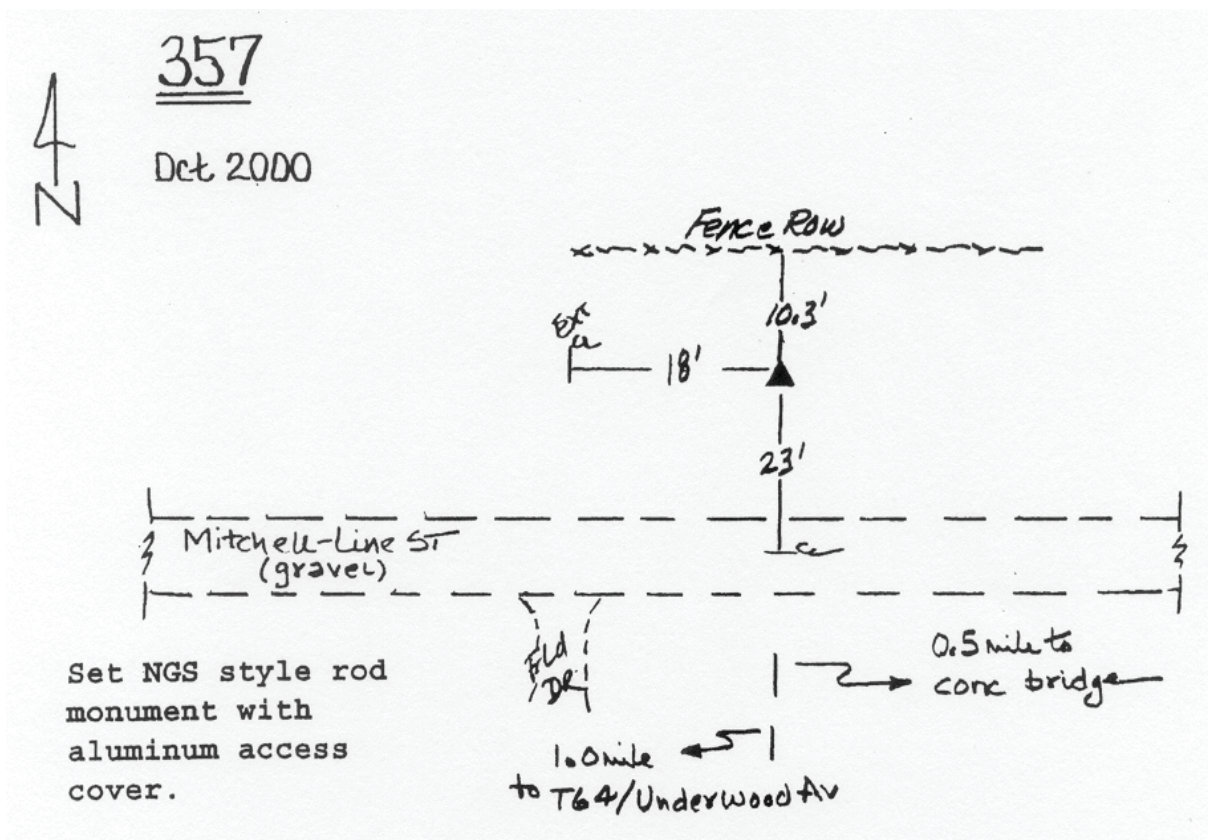
Northing: **3906259.21sft** Easting: **5157424.63sft**

Orthometric Height: **1143.47sft** Ellipsoid Height: **1042.78sft** **Geoid03**

Latitude: **43°12'45.93046"N** Longitude: **92°36'50.72620"W**

Mapping Angle: **0°36'02"** Combination Scale Factor: **0.99994084**

Monument Type: 5/8" dia driven aluminum rod with a 2-1/2" dia. aluminum cap and permanent magnet encased in a 5" dia. PVC pipe with aluminum access cover.



This document was prepared by DCI and GBC for use by Mitchell County, Iowa.