

Mitchell County, Iowa  
Iowa North Zone (1401)  
Horiz. Datum: NAD83(1996)  
Vert. Datum: NAVD 1988  
US Survey Feet  
2006

Point Name: 123

**Designation:** 2000-201 Chickasaw Co GPS Control Point (Set by ASI in 2000)

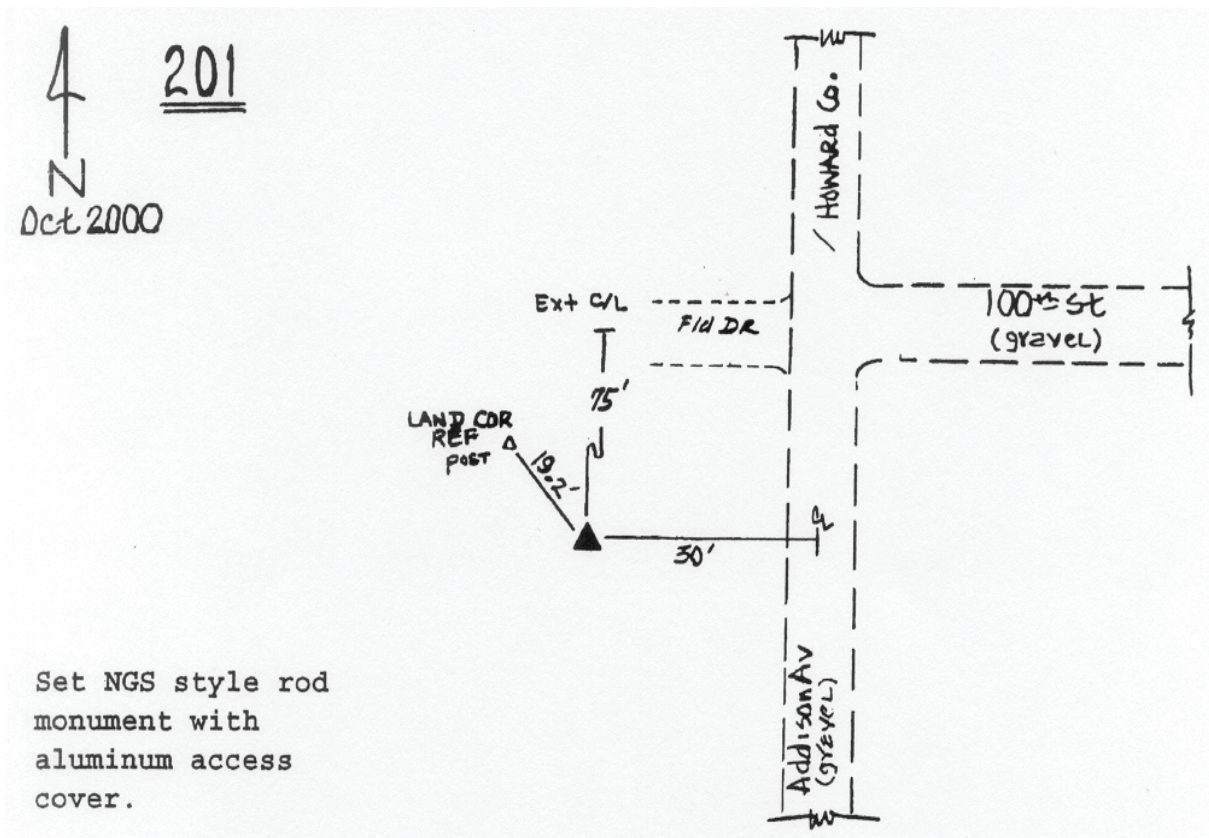
Northing: 3906374.40sft Easting: 5173310.40sft

Orthometric Height: 1188.85sft Ellipsoid Height: 1088.16sft Geoid03

Latitude: 43°12'45.36862"N Longitude: 92°33'16.20660"W

Mapping Angle: 0°38'27" Combination Scale Factor: 0.99993865

**Monument Type:** 5/8" dia driven aluminum rod with a 2-1/2" dia. aluminum cap and permanent magnet encased in a 5" dia. PVC pipe with aluminum access cover.



*This document was prepared by DCI and GBC for use by Mitchell County, Iowa.*