

Mitchell County, Iowa  
Iowa North Zone (1401)  
Horiz. Datum: NAD83(1996)  
Vert. Datum: NAVD 1988  
US Survey Feet  
2006

Point Name: 125

Designation: 2000-402 Howard Co GPS Control Point (Set by ASI in 2000)

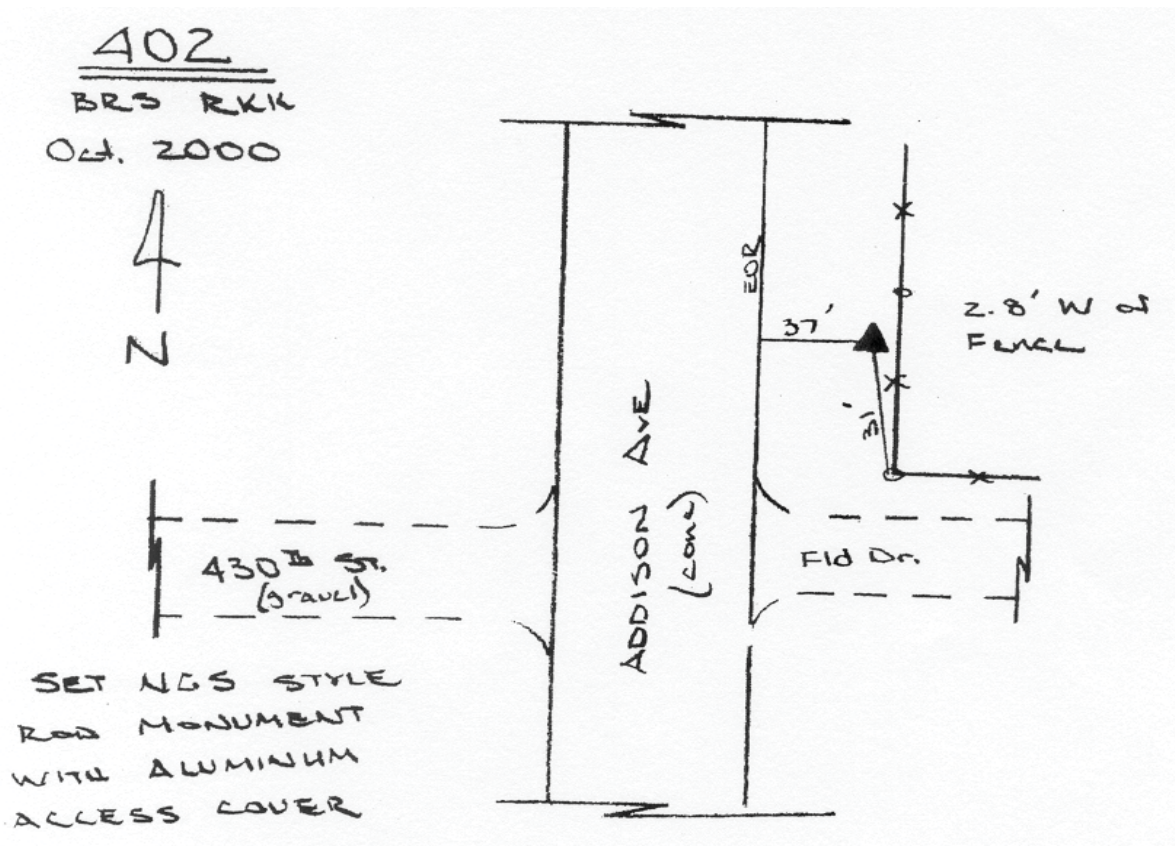
Northing: 3969487.87sft Easting: 5172745.50sft

Orthometric Height: 1272.63sft Ellipsoid Height: 1173.44sft Geoid03

Latitude: 43°23'08.73794"N Longitude: 92°33'14.29735"W

Mapping Angle: 0°38'28" Combination Scale Factor: 0.99996795

Monument Type: 5/8" dia driven aluminum rod with a 2-1/2" dia. aluminum cap and permanent magnet encased in a 5" dia. PVC pipe with aluminum access cover.



This document was prepared by DCI and GBC for use by Mitchell County, Iowa.