

Mitchell County, Iowa
Iowa North Zone (1401)
Horiz. Datum: NAD83(1996)
Vert. Datum: NAVD 1988
US Survey Feet
2006

Point Name: 126

Designation: 2000-403 Howard Co GPS Control Point (Set by ASI in 2000)

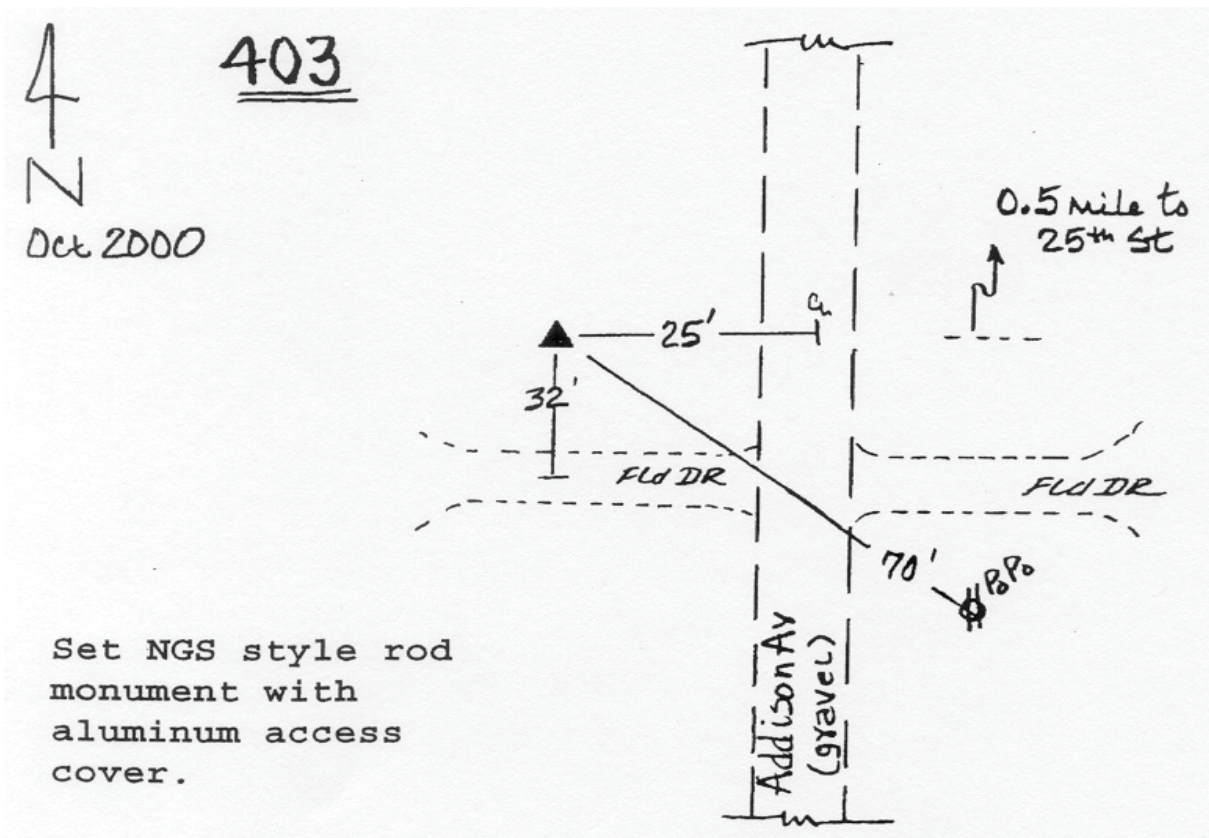
Northing: 4000506.29sft Easting: 5172507.01sft

Orthometric Height: 1380.91sft Ellipsoid Height: 1282.59sft Geoid03

Latitude: 43°28'15.08609"N Longitude: 92°33'12.82433"W

Mapping Angle: 0°38'29" Combination Scale Factor: 0.99998251

Monument Type: 5/8" dia driven aluminum rod with a 2-1/2" dia. aluminum cap and permanent magnet encased in a 5" dia. PVC pipe with aluminum access cover.



This document was prepared by DCI and GBC for use by Mitchell County, Iowa.