

**Mitchell County, Iowa**  
 Iowa North Zone (1401)  
 Horiz. Datum: NAD83(1996)  
 Vert. Datum: NAVD 1988  
 US Survey Feet  
**2006**

Point Name: **602**

**Designation:** 2005-602 Mitchell Co GPS Control Point

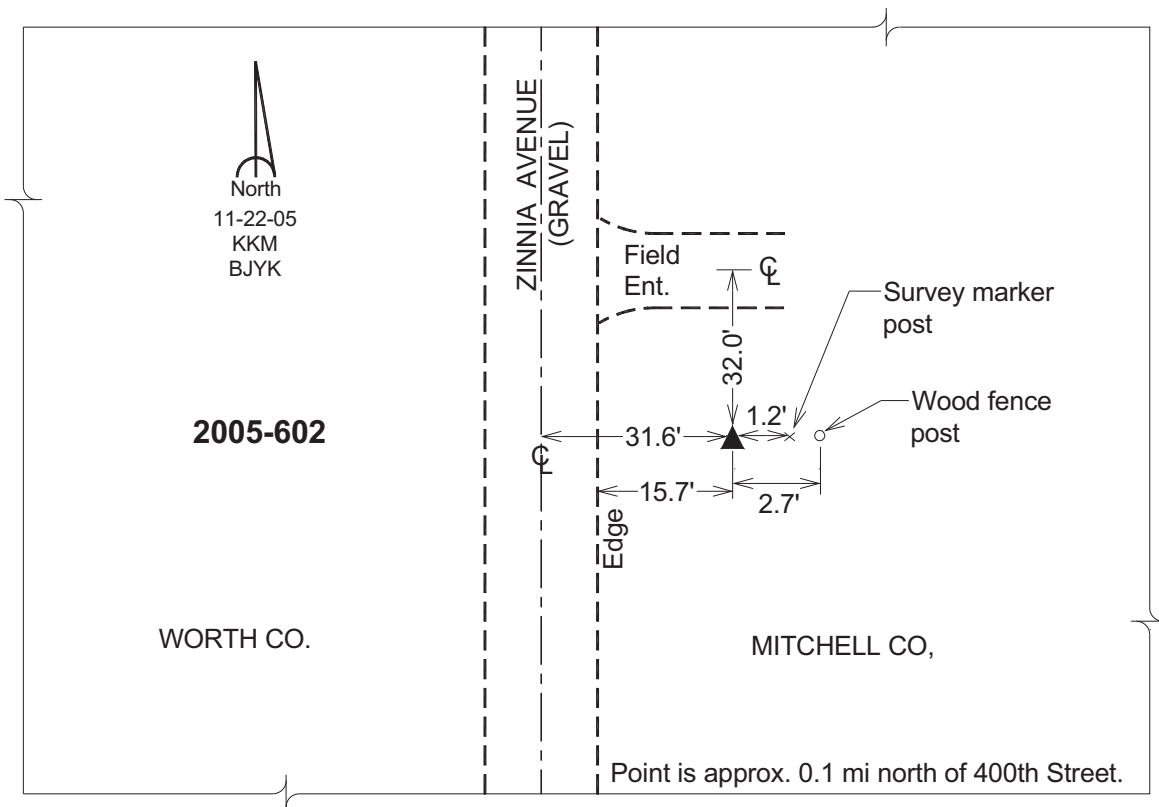
Northing: **3953153.82sft** Easting: **5047879.00sft**

Orthometric Height: **1202.72sft** Ellipsoid Height: **1107.55sft** **Geoid03**

Latitude: **43°20'37.79417"N** Longitude: **93°01'26.40701"W**

Mapping Angle: **0°19'21"** Combination Scale Factor: **0.99996217**

**Monument Type:** Berntsen Top Security Rod Monument with a 2-1/2" dia. domed survey cap and permanent magnet encased in a 6" dia. PVC pipe with a NGS style aluminum access cover.



*This document was prepared by DCI and GBC for use by Mitchell County, Iowa.*