

Mitchell County, Iowa
 Iowa North Zone (1401)
 Horiz. Datum: NAD83(1996)
 Vert. Datum: NAVD 1988
 US Survey Feet
2006

Point Name: **603**

Designation: 2005-603 Mitchell Co GPS Control Point

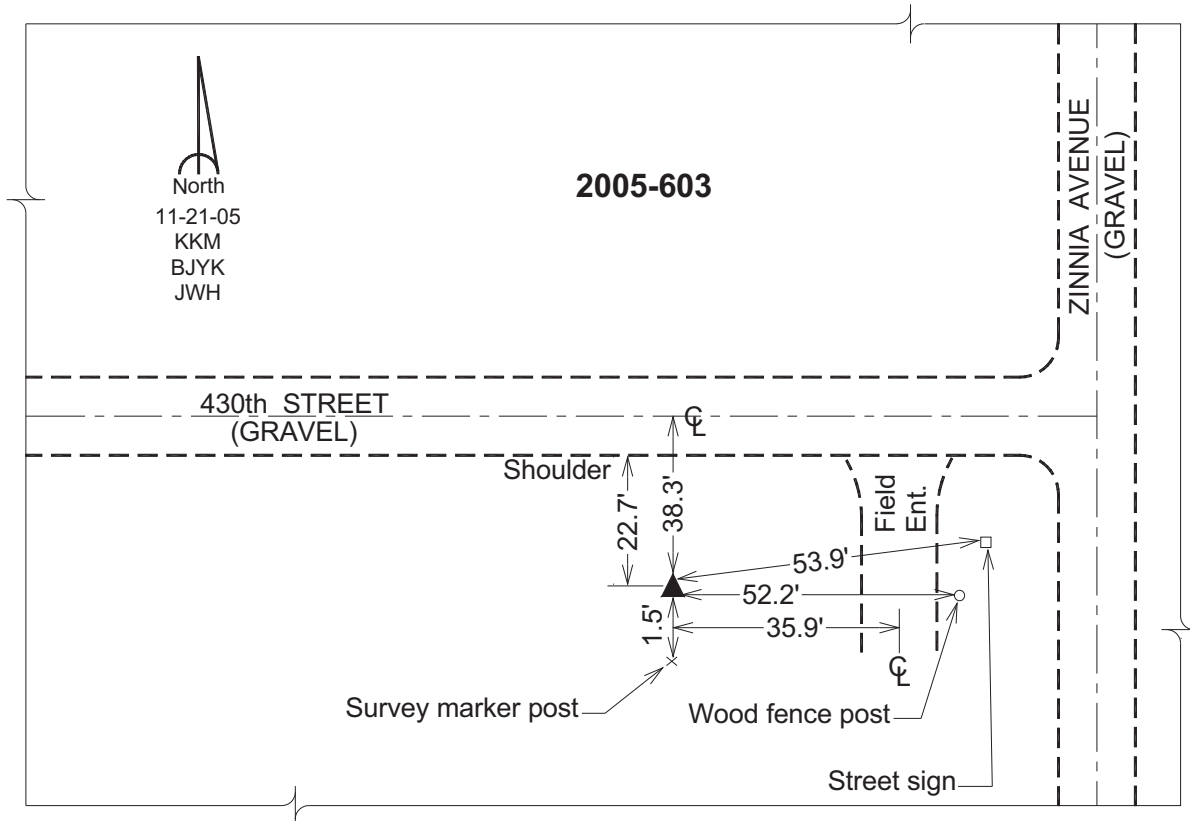
Northing: **3968467.65**sft Easting: **5047727.05**sft

Orthometric Height: **1215.81**sft Ellipsoid Height: **1120.90**sft **Geoid03**

Latitude: **43°23'09.04496"N** Longitude: **93°01'27.29693"W**

Mapping Angle: **0°19'21"** Combination Scale Factor: **0.99997047**

Monument Type: Berntsen Top Security Rod Monument with a 2-1/2" dia. domed survey cap and permanent magnet encased in a 6" dia. PVC pipe with a NGS style aluminum access cover.



This document was prepared by DCI and GBC for use by Mitchell County, Iowa.