

**Mitchell County, Iowa**  
 Iowa North Zone (1401)  
 Horiz. Datum: NAD83(1996)  
 Vert. Datum: NAVD 1988  
 US Survey Feet  
**2006**

Point Name: **605**

**Designation:** 2005-605 Mitchell Co GPS Control Point

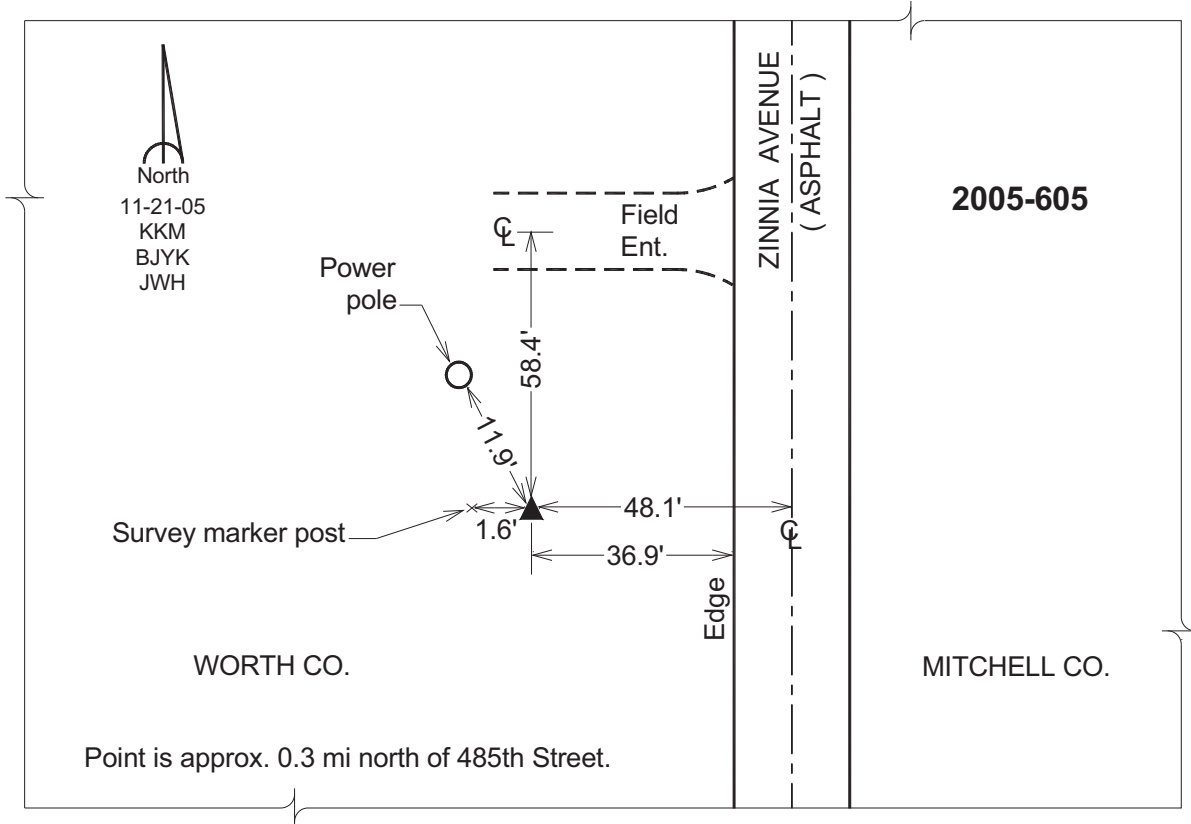
Northing: **3998942.68sft** Easting: **5047439.49sft**

Orthometric Height: **1182.34sft** Ellipsoid Height: **1087.89sft** **Geoid03**

Latitude: **43°28'10.03062"N** Longitude: **93°01'28.87071"W**

Mapping Angle: **0°19'20"** Combination Scale Factor: **0.99999146**

**Monument Type:** Berntsen Top Security Rod Monument with a 2-1/2" dia. domed survey cap and permanent magnet encased in a 6" dia. PVC pipe with a NGS style aluminum access cover.



*This document was prepared by DCI and GBC for use by Mitchell County, Iowa.*