

Mitchell County, Iowa
 Iowa North Zone (1401)
 Horiz. Datum: NAD83(1996)
 Vert. Datum: NAVD 1988
 US Survey Feet
2006

Point Name: **606**

Designation: 2005-606 Mitchell Co GPS Control Point

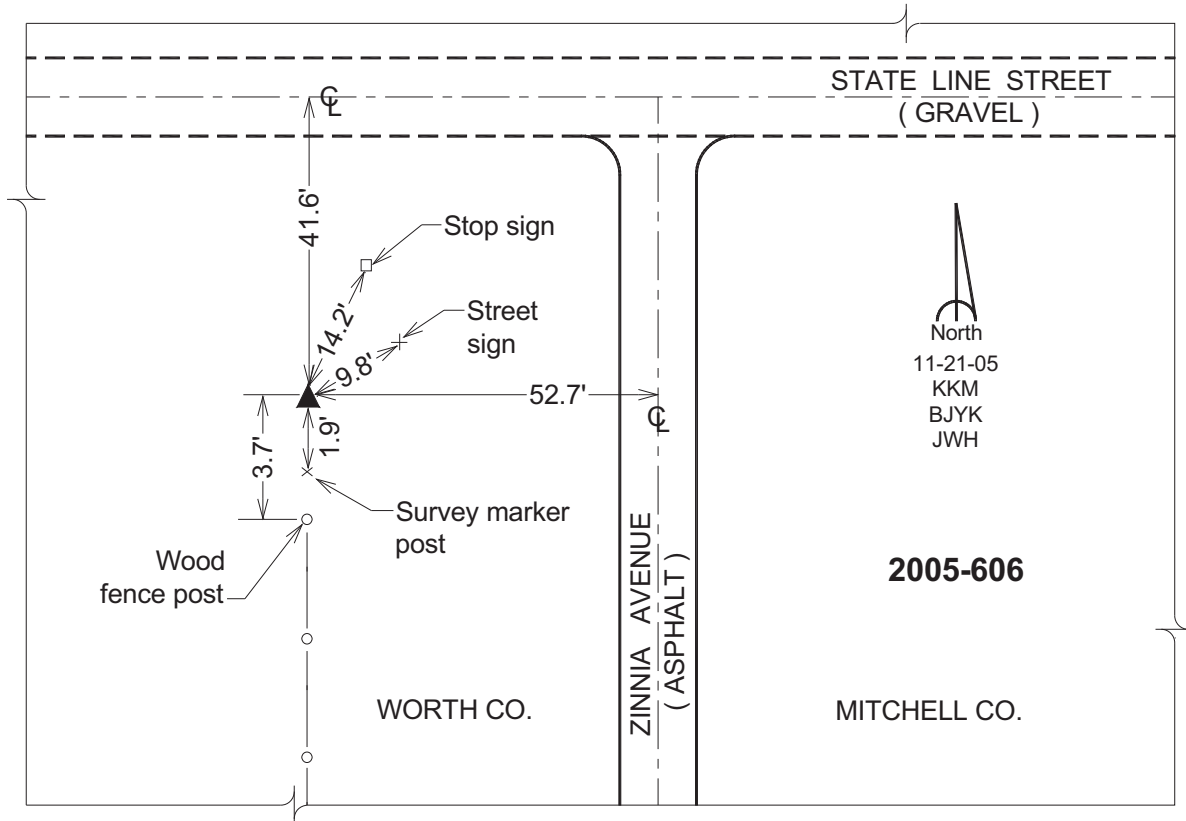
Northing: **4009932.75sft** Easting: **5047413.19sft**

Orthometric Height: **1170.59sft** Ellipsoid Height: **1076.31sft** **Geoid03**

Latitude: **43°29'58.56693"N** Longitude: **93°01'28.38923"W**

Mapping Angle: **0°19'20"** Combination Scale Factor: **0.99999954**

Monument Type: Berntsen Top Security Rod Monument with a 2-1/2" dia. domed survey cap and permanent magnet encased in a 6" dia. PVC pipe with a NGS style aluminum access cover.



This document was prepared by DCI and GBC for use by Mitchell County, Iowa.