

Mitchell County, Iowa
Iowa North Zone (1401)
Horiz. Datum: NAD83(1996)
Vert. Datum: NAVD 1988
US Survey Feet
2006

Point Name: **607**

Designation: 2005-607 Mitchell Co GPS Control Point

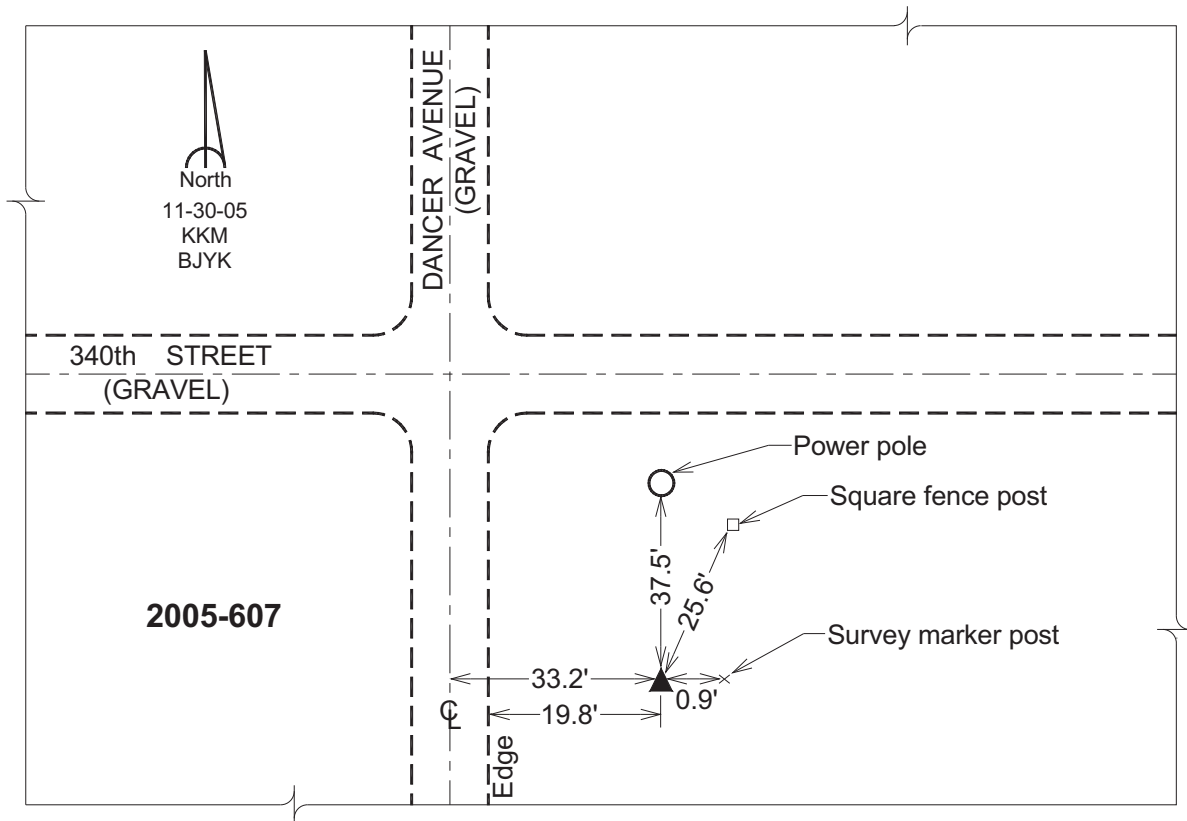
Northing: **3920962.58**sft Easting: **5063888.83**sft

Orthometric Height: **1169.12**sft Ellipsoid Height: **1072.20**sft **Geoid03**

Latitude: **43°15'18.91425"N** Longitude: **92°57'52.52016"W**

Mapping Angle: **0°21'46"** Combination Scale Factor: **0.99994678**

Monument Type: Berntsen Top Security Rod Monument with a 2-1/2" dia. domed survey cap and permanent magnet encased in a 6" dia. PVC pipe with a NGS style aluminum access cover.



This document was prepared by DCI and GBC for use by Mitchell County, Iowa.