

Mitchell County, Iowa
Iowa North Zone (1401)
Horiz. Datum: NAD83(1996)
Vert. Datum: NAVD 1988
US Survey Feet
2006

Point Name: 608

Designation: 2005-608 Mitchell Co GPS Control Point

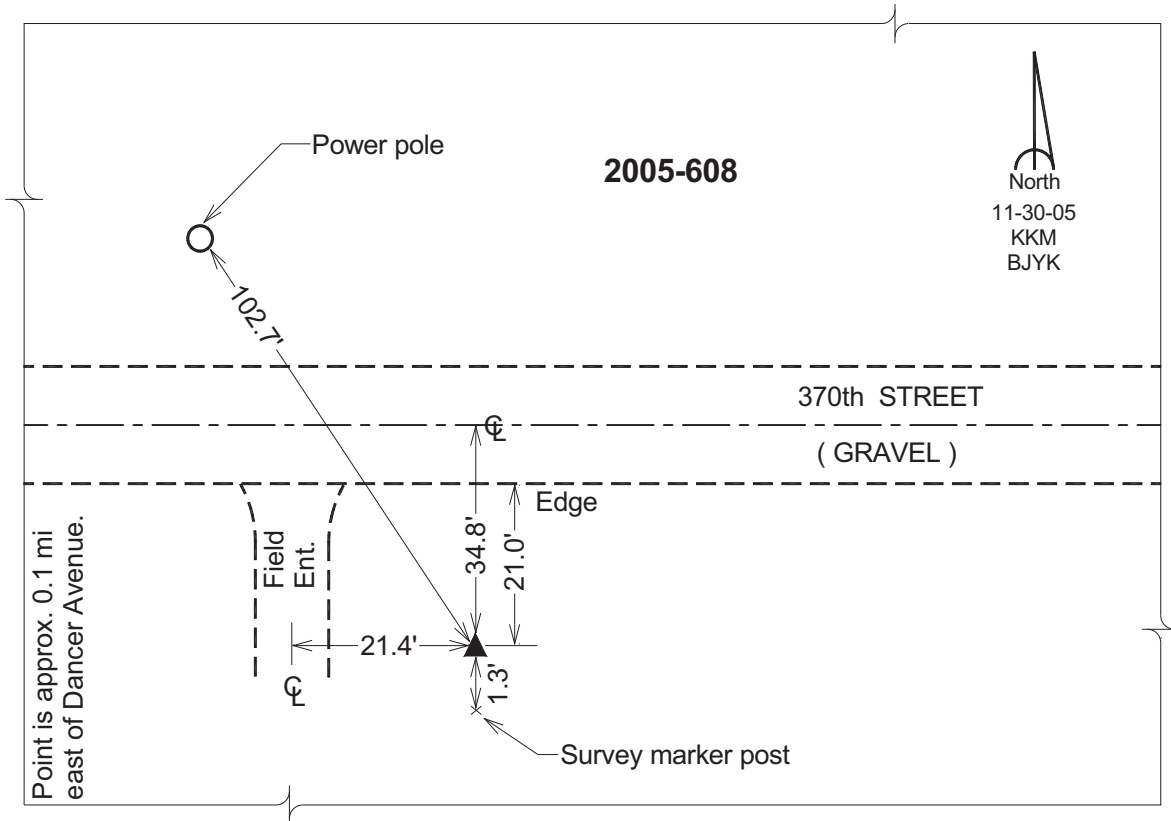
Northing: 3936849.55sft Easting: 5064181.27sft

Orthometric Height: 1177.18sft Ellipsoid Height: 1080.63sft Geoid03

Latitude: 43°17'55.80319"N Longitude: 92°57'47.20508"W

Mapping Angle: 0°21'50" Combination Scale Factor: 0.99995448

Monument Type: Berntsen Top Security Rod Monument with a 2-1/2" dia. domed survey cap and permanent magnet encased in a 6" dia. PVC pipe with a NGS style aluminum access cover.



This document was prepared by DCI and GBC for use by Mitchell County, Iowa.