

Mitchell County, Iowa
Iowa North Zone (1401)
Horiz. Datum: NAD83(1996)
Vert. Datum: NAVD 1988
US Survey Feet
2006

Point Name: **609**

Designation: 2005-609 Mitchell Co GPS Control Point

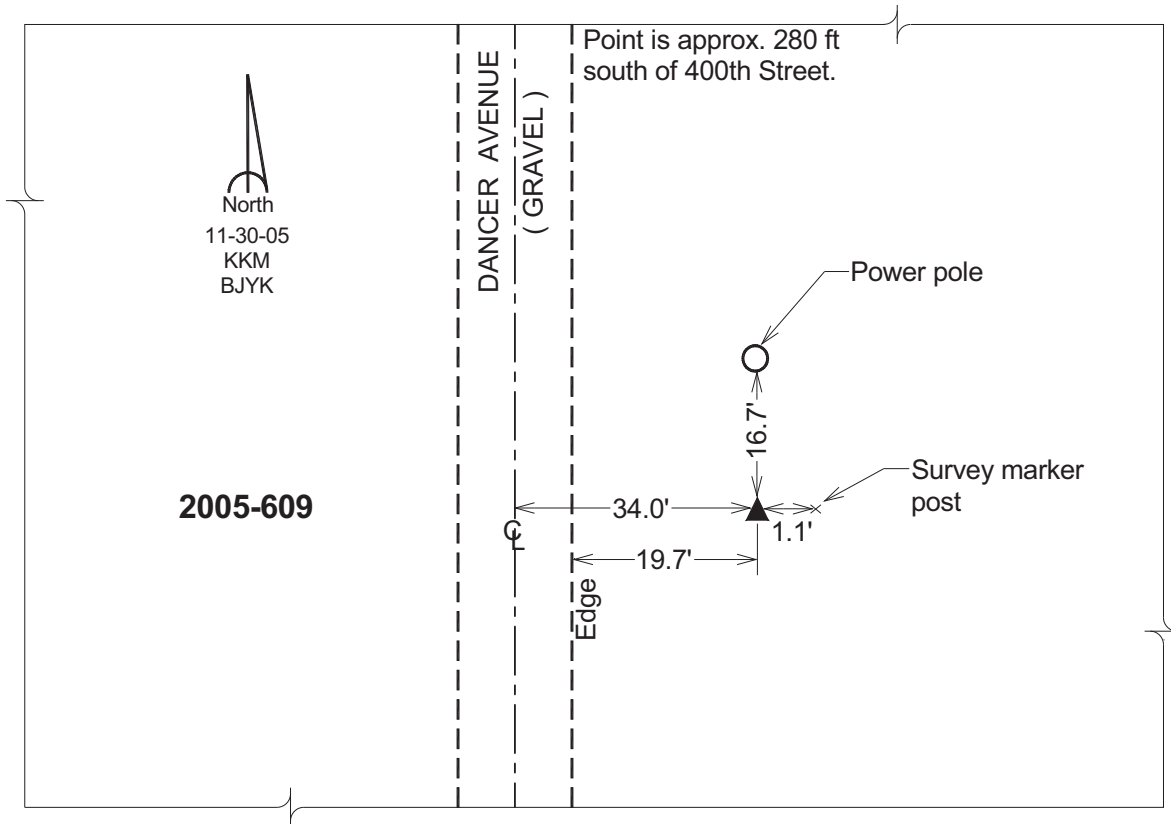
Northing: **3952404.23**sft Easting: **5063645.08**sft

Orthometric Height: **1192.47**sft Ellipsoid Height: **1096.33**sft **Geoid03**

Latitude: **43°20'29.45977"N** Longitude: **92°57'53.12389"W**

Mapping Angle: **0°21'46"** Combination Scale Factor: **0.99996223**

Monument Type: Berntsen Top Security Rod Monument with a 2-1/2" dia. domed survey cap and permanent magnet encased in a 6" dia. PVC pipe with a NGS style aluminum access cover.



This document was prepared by DCI and GBC for use by Mitchell County, Iowa.