

Mitchell County, Iowa
 Iowa North Zone (1401)
 Horiz. Datum: NAD83(1996)
 Vert. Datum: NAVD 1988
 US Survey Feet
2006

Point Name: **610**

Designation: 2005-610 Mitchell Co GPS Control Point

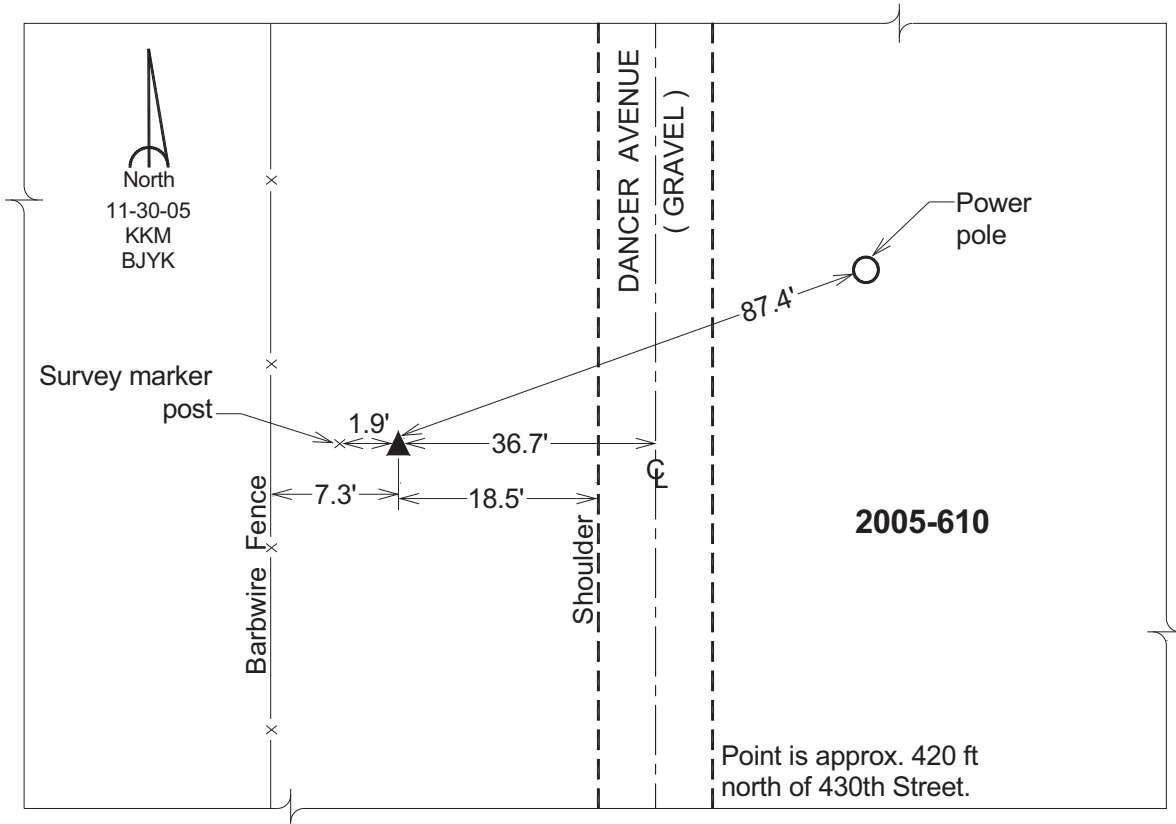
Northing: **3969003.04sft** Easting: **5063380.64sft**

Orthometric Height: **1179.99sft** Ellipsoid Height: **1084.27sft** **Geoid03**

Latitude: **43°23'13.40869"N** Longitude: **92°57'55.28164"W**

Mapping Angle: **0°21'44"** Combination Scale Factor: **0.99997249**

Monument Type: Berntsen Top Security Rod Monument with a 2-1/2" dia. domed survey cap and permanent magnet encased in a 6" dia. PVC pipe with a NGS style aluminum access cover.



This document was prepared by DCI and GBC for use by Mitchell County, Iowa.