

Mitchell County, Iowa
Iowa North Zone (1401)
Horiz. Datum: NAD83(1996)
Vert. Datum: NAVD 1988
US Survey Feet
2006

Point Name: **611**

Designation: 2005-611 Mitchell Co GPS Control Point

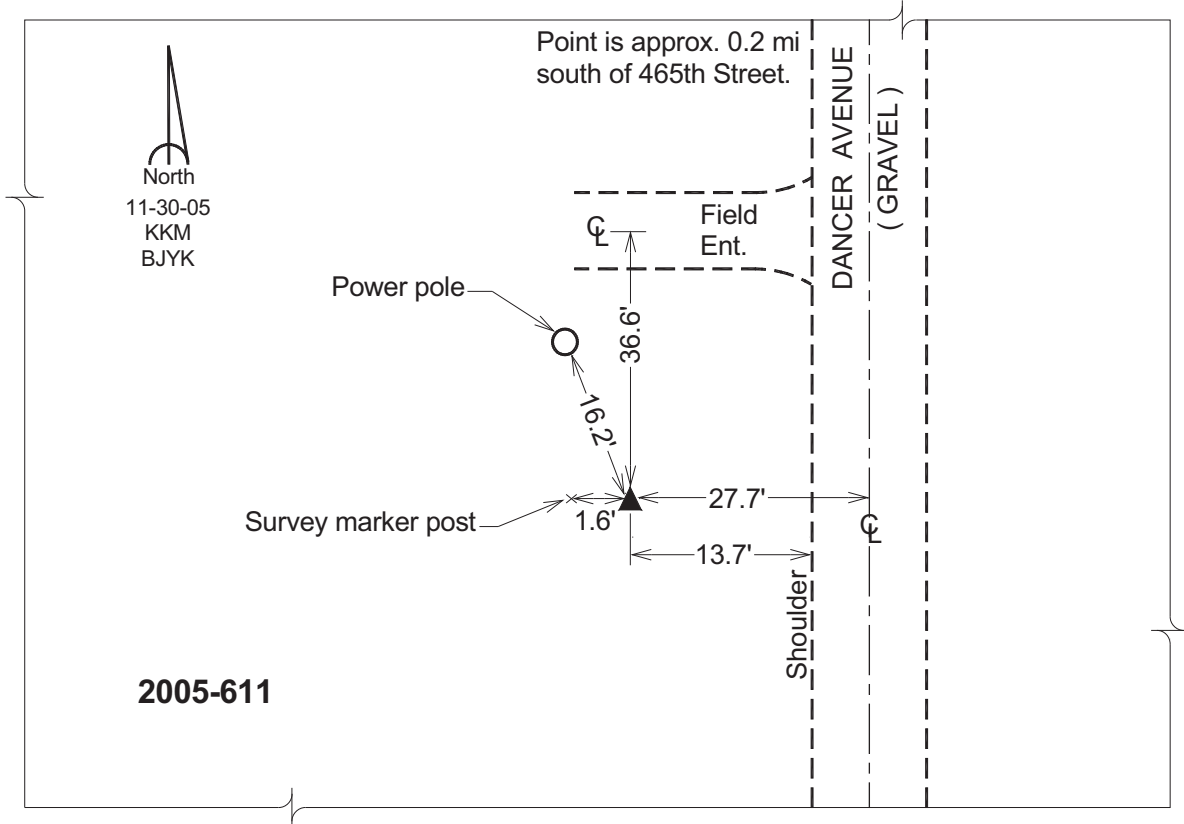
Northing: **3985641.36sft** Easting: **5061953.06sft**

Orthometric Height: **1174.76sft** Ellipsoid Height: **1079.49sft** **Geoid03**

Latitude: **43°25'57.81711"N** Longitude: **92°58'13.20158"W**

Mapping Angle: **0°21'32"** Combination Scale Factor: **0.99998307**

Monument Type: Berntsen Top Security Rod Monument with a 2-1/2" dia. domed survey cap and permanent magnet encased in a 6" dia. PVC pipe with a NGS style aluminum access cover.



This document was prepared by DCI and GBC for use by Mitchell County, Iowa.