

**Mitchell County, Iowa**  
 Iowa North Zone (1401)  
 Horiz. Datum: NAD83(1996)  
 Vert. Datum: NAVD 1988  
 US Survey Feet  
**2006**

Point Name: **612**

**Designation:** 2005-612 Mitchell Co GPS Control Point

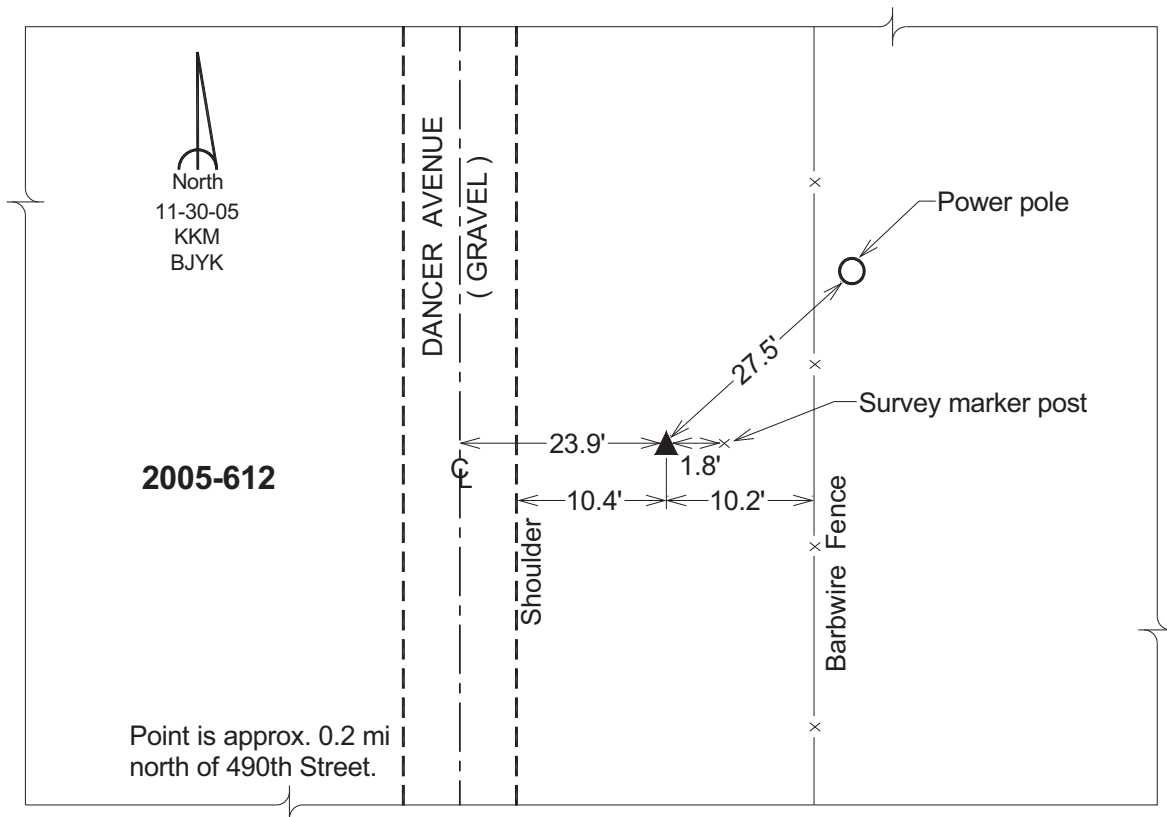
Northing: **4001082.85sft** Easting: **5063040.20sft**

Orthometric Height: **1158.84sft** Ellipsoid Height: **1063.83sft** **Geoid03**

Latitude: **43°28'30.24664"N** Longitude: **92°57'57.14702"W**

Mapping Angle: **0°21'43"** Combination Scale Factor: **0.99999399**

**Monument Type:** Berntsen Top Security Rod Monument with a 2-1/2" dia. domed survey cap and permanent magnet encased in a 6" dia. PVC pipe with a NGS style aluminum access cover.



*This document was prepared by DCI and GBC for use by Mitchell County, Iowa.*