

Mitchell County, Iowa
Iowa North Zone (1401)
Horiz. Datum: NAD83(1996)
Vert. Datum: NAVD 1988
US Survey Feet
2006

Point Name: **614**

Designation: 2005-614 Mitchell Co GPS Control Point

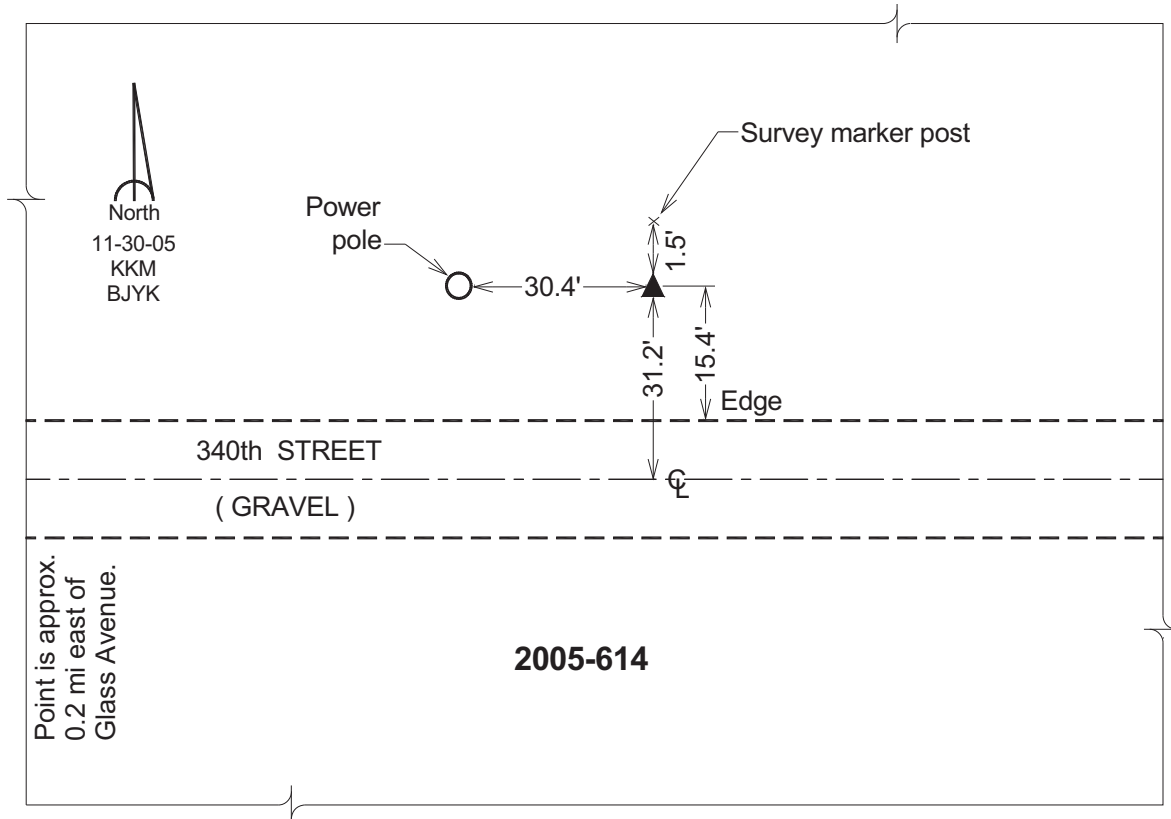
Northing: **3921055.58sft** Easting: **5080613.52sft**

Orthometric Height: **1151.91sft** Ellipsoid Height: **1053.93sft** **Geoid03**

Latitude: **43°15'18.72527"N** Longitude: **92°54'06.51740"W**

Mapping Angle: **0°24'20"** Combination Scale Factor: **0.99994764**

Monument Type: Berntsen Top Security Rod Monument with a 2-1/2" dia. domed survey cap and permanent magnet encased in a 6" dia. PVC pipe with a NGS style aluminum access cover.



This document was prepared by DCI and GBC for use by Mitchell County, Iowa.