

Mitchell County, Iowa
Iowa North Zone (1401)
Horiz. Datum: NAD83(1996)
Vert. Datum: NAVD 1988
US Survey Feet
2006

Point Name: **616**

Designation: 2005-616 Mitchell Co GPS Control Point

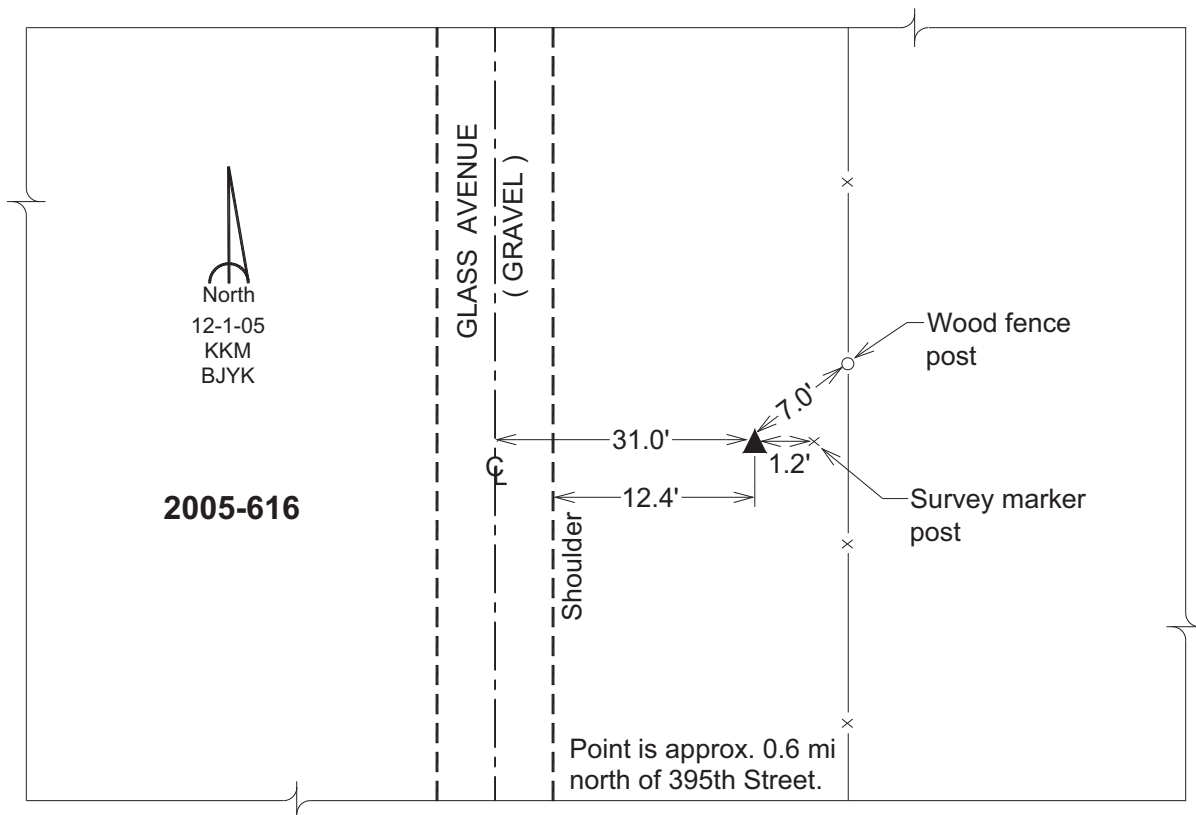
Northing: **3953421.64**sft Easting: **5079514.51**sft

Orthometric Height: **1175.86**sft Ellipsoid Height: **1078.80**sft **Geoid03**

Latitude: **43°20'38.46025"N** Longitude: **92°54'18.29014"W**

Mapping Angle: **0°24'12"** Combination Scale Factor: **0.99996358**

Monument Type: Berntsen Top Security Rod Monument with a 2-1/2" dia. domed survey cap and permanent magnet encased in a 6" dia. PVC pipe with a NGS style aluminum access cover.



This document was prepared by DCI and GBC for use by Mitchell County, Iowa.