

Mitchell County, Iowa
Iowa North Zone (1401)
Horiz. Datum: NAD83(1996)
Vert. Datum: NAVD 1988
US Survey Feet
2006

Point Name: **617**

Designation: 2005-617 Mitchell Co GPS Control Point

Northing: **3968296.12sft** Easting: **5076366.89sft**

Orthometric Height: **1161.74sft** Ellipsoid Height: **1065.28sft** **Geoid03**

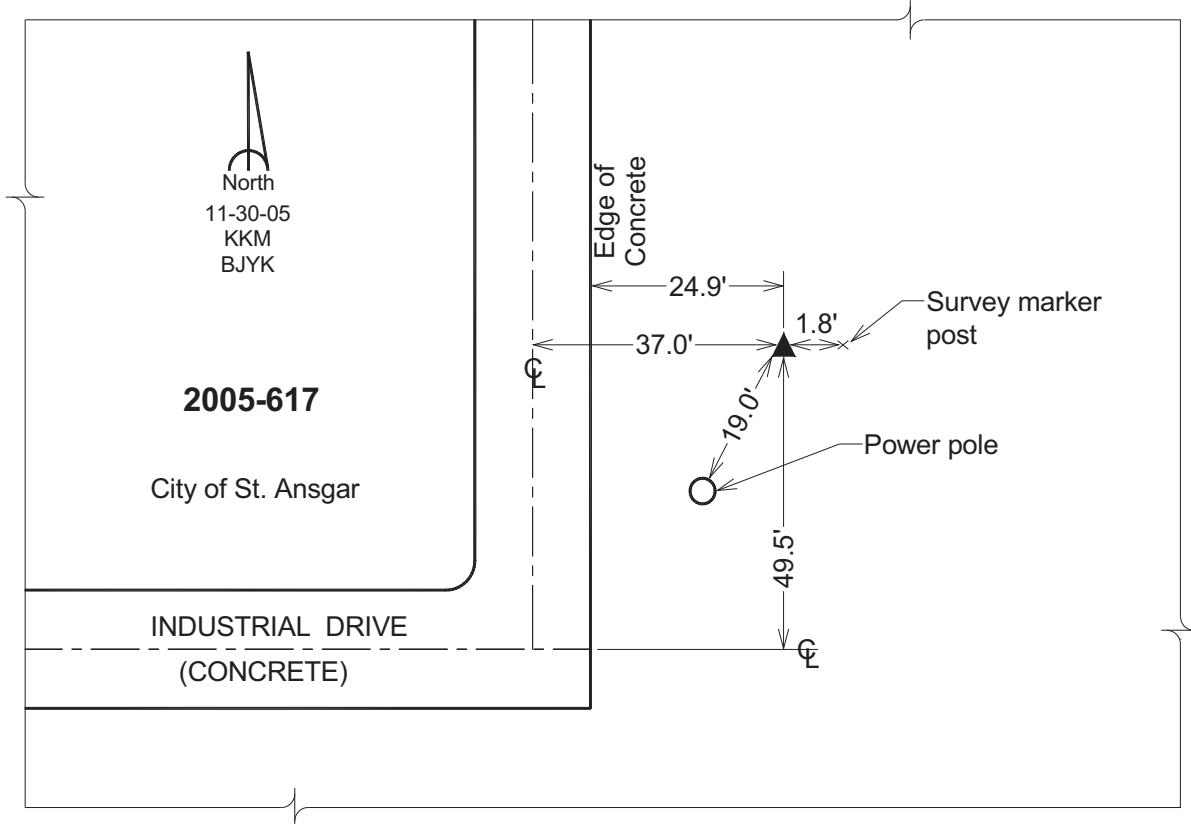
Latitude: **43°23'05.57896"N**

Longitude: **92°54'59.49458"W**

Mapping Angle: **0°23'44"**

Combination Scale Factor: **0.99997292**

Monument Type: Berntsen Top Security Rod Monument with a 2-1/2" dia. domed survey cap and permanent magnet encased in a 6" dia. PVC pipe with a NGS style aluminum access cover.



This document was prepared by DCI and GBC for use by Mitchell County, Iowa.