

Mitchell County, Iowa
Iowa North Zone (1401)
Horiz. Datum: NAD83(1996)
Vert. Datum: NAVD 1988
US Survey Feet
2006

Point Name: **621**

Designation: 2005-621 Mitchell Co GPS Control Point

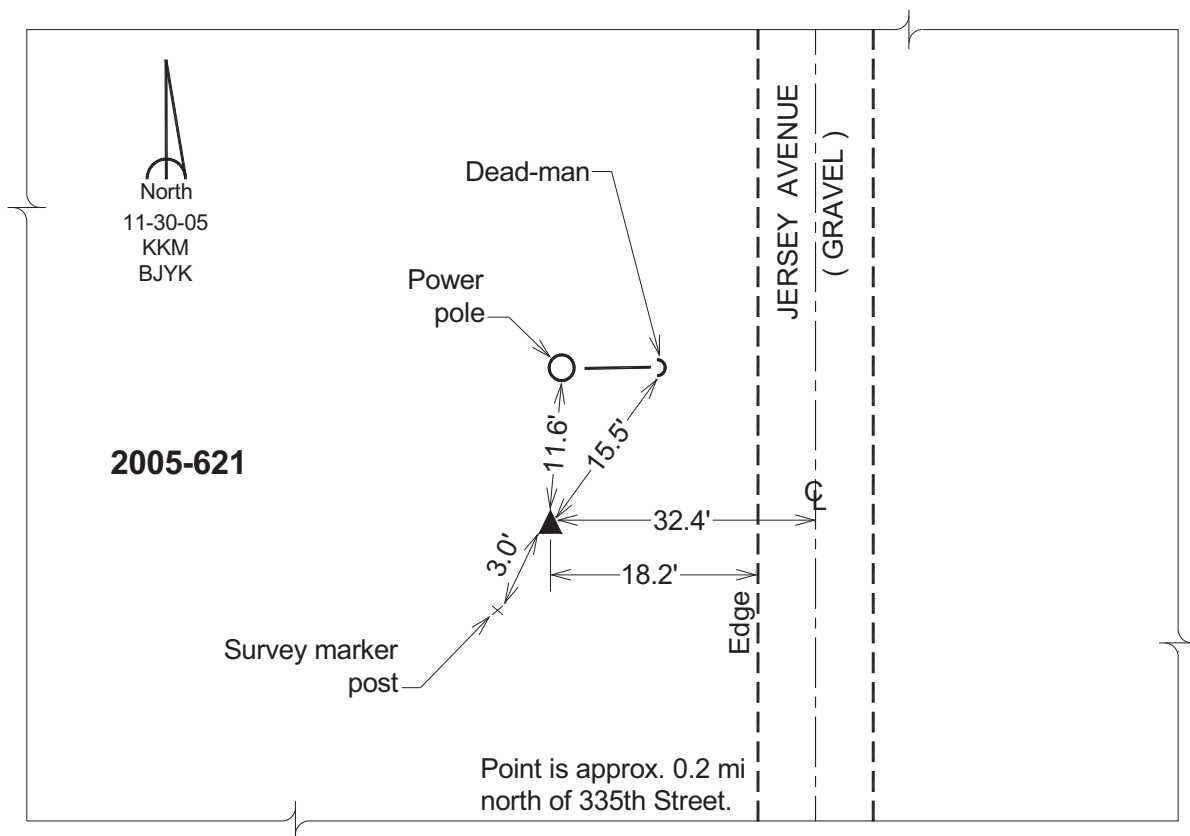
Northing: **3919823.16sft** Easting: **5094429.74sft**

Orthometric Height: **1116.78sft** Ellipsoid Height: **1018.03sft** **Geoid03**

Latitude: **43°15'05.54583"N** Longitude: **92°50'59.95364"W**

Mapping Angle: **0°26'26"** Combination Scale Factor: **0.99994870**

Monument Type: Berntsen Top Security Rod Monument with a 2-1/2" dia. domed survey cap and permanent magnet encased in a 6" dia. PVC pipe with a NGS style aluminum access cover.



This document was prepared by DCI and GBC for use by Mitchell County, Iowa.