

**Mitchell County, Iowa**  
Iowa North Zone (1401)  
Horiz. Datum: NAD83(1996)  
Vert. Datum: NAVD 1988  
US Survey Feet  
**2006**

Point Name: **622**

**Designation:** 2005-622 Mitchell Co GPS Control Point

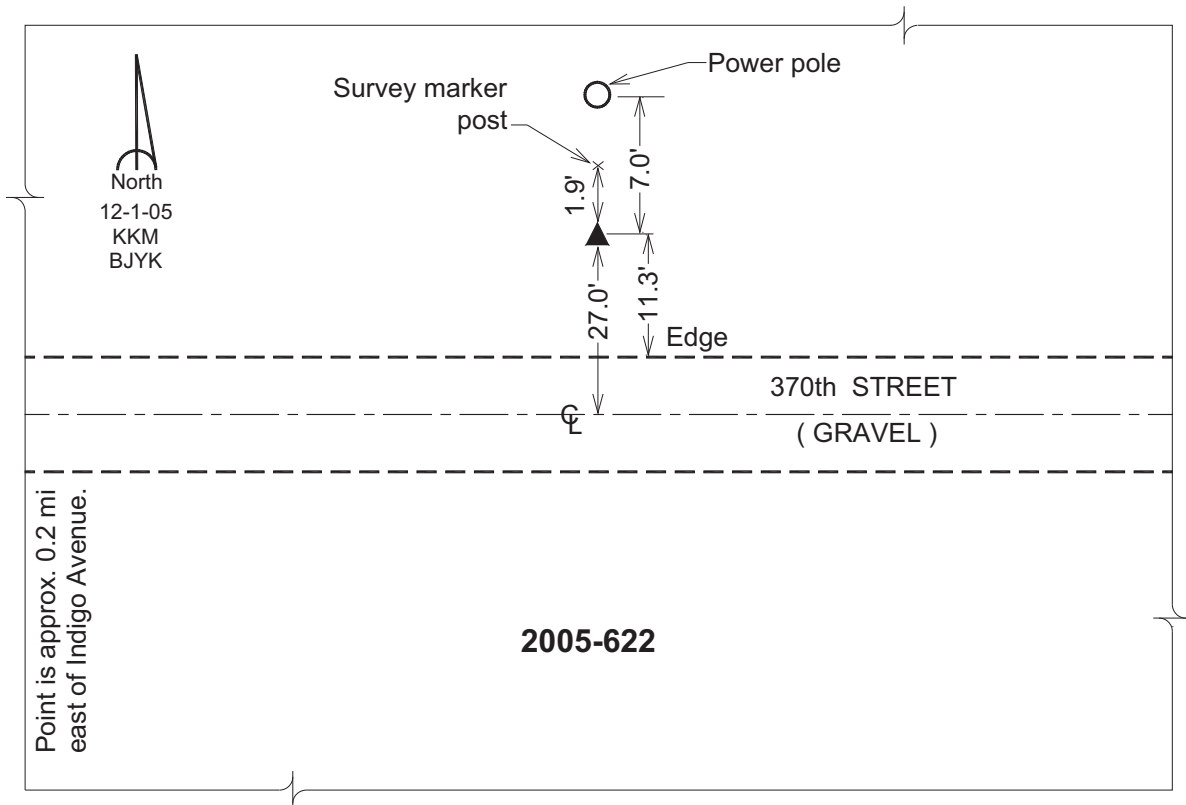
Northing: **3936984.09sft** Easting: **5093616.95sft**

Orthometric Height: **1181.15sft** Ellipsoid Height: **1082.91sft** **Geoid03**

Latitude: **43°17'55.09555"N** Longitude: **92°51'09.16001"W**

Mapping Angle: **0°26'20"** Combination Scale Factor: **0.99995433**

**Monument Type:** Berntsen Top Security Rod Monument with a 2-1/2" dia. domed survey cap and permanent magnet encased in a 6" dia. PVC pipe with a NGS style aluminum access cover.



*This document was prepared by DCI and GBC for use by Mitchell County, Iowa.*