

Mitchell County, Iowa
Iowa North Zone (1401)
Horiz. Datum: NAD83(1996)
Vert. Datum: NAVD 1988
US Survey Feet
2006

Point Name: **623**

Designation: 2005-623 Mitchell Co GPS Control Point

Northing: **3952833.73sft** Easting: **5094177.05sft**

Orthometric Height: **1184.83sft** Ellipsoid Height: **1087.05sft** **Geoid03**

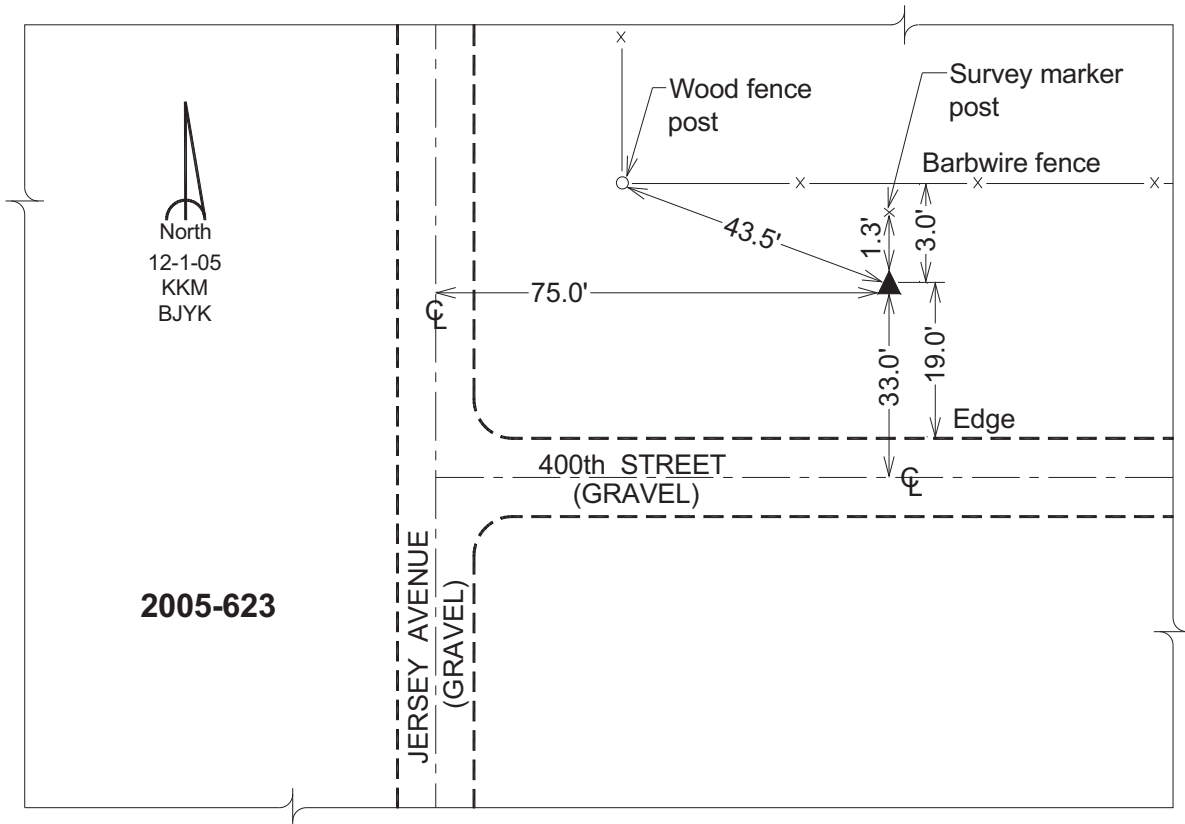
Latitude: **43°20'31.58766"N**

Longitude: **92°50'59.93843"W**

Mapping Angle: **0°26'26"**

Combination Scale Factor: **0.99996279**

Monument Type: Berntsen Top Security Rod Monument with a 2-1/2" dia. domed survey cap and permanent magnet encased in a 6" dia. PVC pipe with a NGS style aluminum access cover.



This document was prepared by DCI and GBC for use by Mitchell County, Iowa.