

Mitchell County, Iowa
Iowa North Zone (1401)
Horiz. Datum: NAD83(1996)
Vert. Datum: NAVD 1988
US Survey Feet
2006

Point Name: **624**

Designation: 2005-624 Mitchell Co GPS Control Point

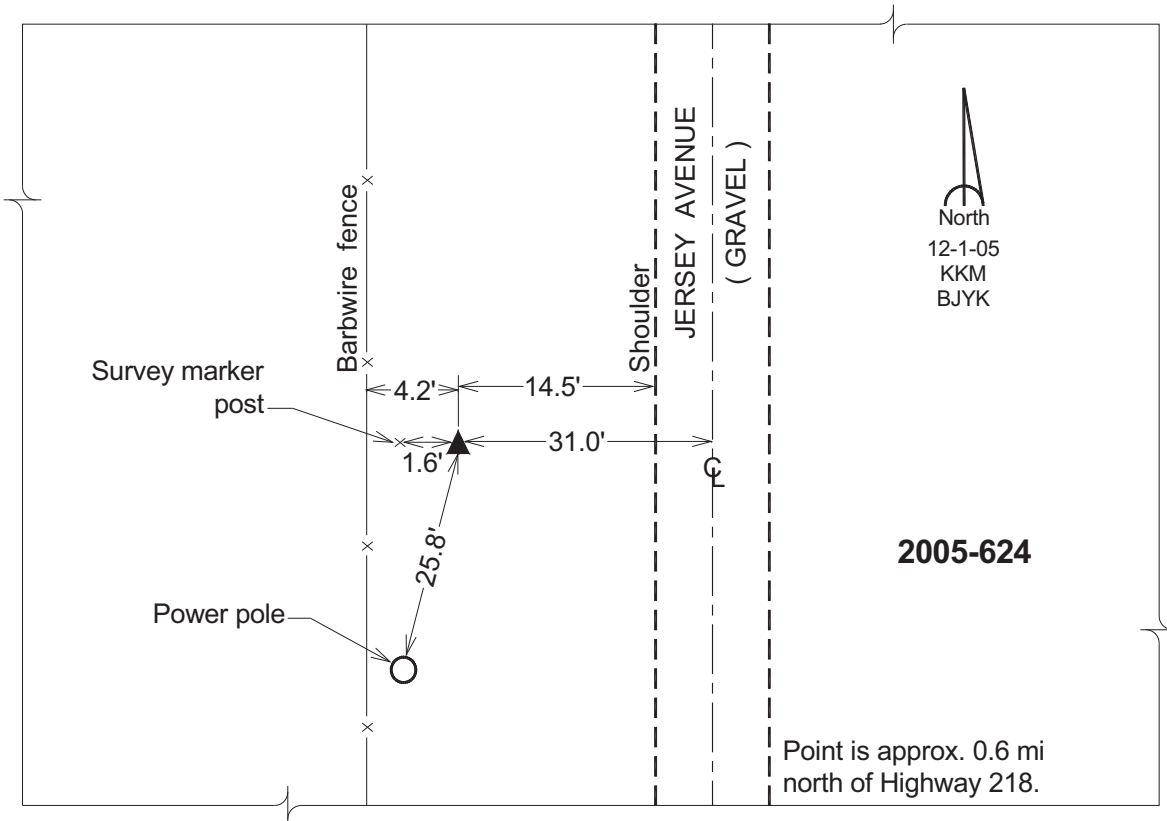
Northing: **3969375.50sft** Easting: **5093892.41sft**

Orthometric Height: **1216.22sft** Ellipsoid Height: **1118.96sft** **Geoid03**

Latitude: **43°23'14.97679"N** Longitude: **92°51'02.07050"W**

Mapping Angle: **0°26'25"** Combination Scale Factor: **0.99997093**

Monument Type: Berntsen Top Security Rod Monument with a 2-1/2" dia. domed survey cap and permanent magnet encased in a 6" dia. PVC pipe with a NGS style aluminum access cover.



This document was prepared by DCI and GBC for use by Mitchell County, Iowa.