

Mitchell County, Iowa
Iowa North Zone (1401)
Horiz. Datum: NAD83(1996)
Vert. Datum: NAVD 1988
US Survey Feet
2006

Point Name: **626**

Designation: 2005-626 Mitchell Co GPS Control Point

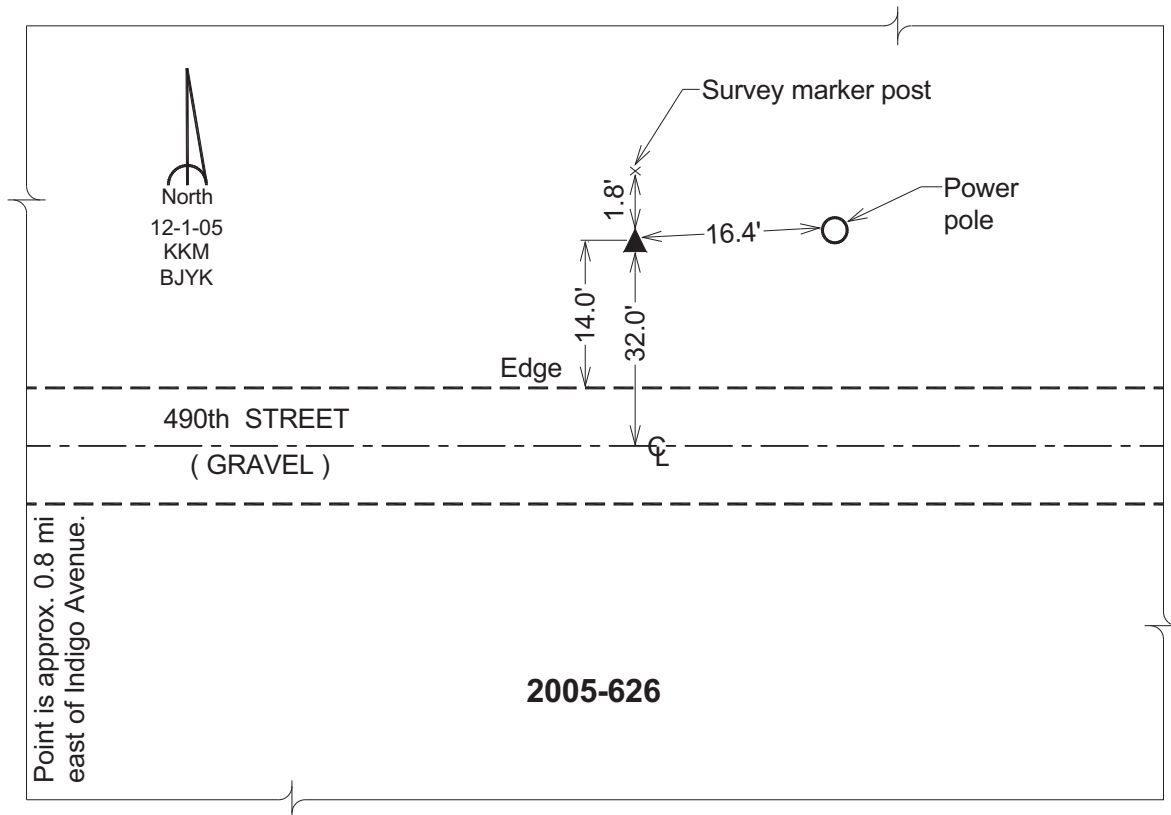
Northing: **4000476.69sft** Easting: **5092537.52sft**

Orthometric Height: **1244.91sft** Ellipsoid Height: **1148.47sft** **Geoid03**

Latitude: **43°28'22.22837"N** Longitude: **92°51'17.20327"W**

Mapping Angle: **0°26'14"** Combination Scale Factor: **0.99998940**

Monument Type: Berntsen Top Security Rod Monument with a 2-1/2" dia. domed survey cap and permanent magnet encased in a 6" dia. PVC pipe with a NGS style aluminum access cover.



This document was prepared by DCI and GBC for use by Mitchell County, Iowa.