

Mitchell County, Iowa
Iowa North Zone (1401)
Horiz. Datum: NAD83(1996)
Vert. Datum: NAVD 1988
US Survey Feet
2006

Point Name: **627**

Designation: 2005-627 Mitchell Co GPS Control Point

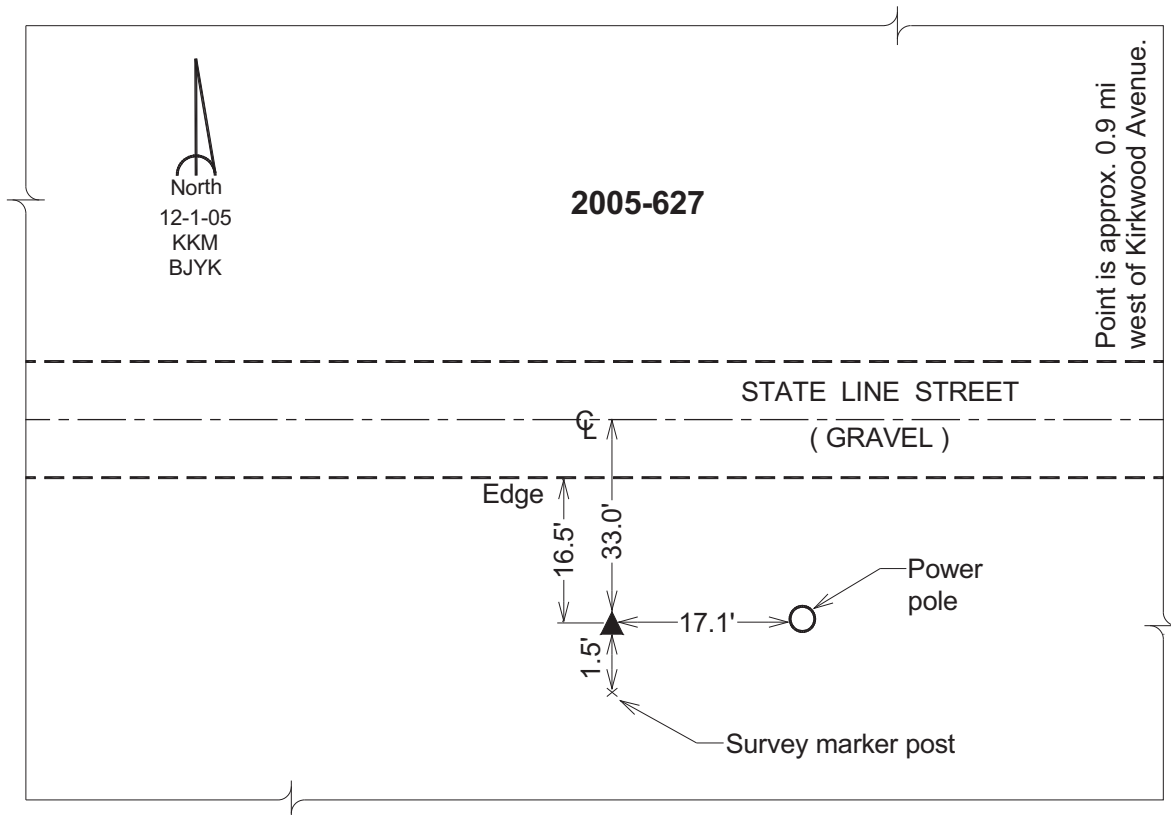
Northing: **4010317.10sft** Easting: **5094081.29sft**

Orthometric Height: **1235.09sft** Ellipsoid Height: **1138.76sft** **Geoid03**

Latitude: **43°29'59.29115"N** Longitude: **92°50'55.24122"W**

Mapping Angle: **0°26'29"** Combination Scale Factor: **0.99999661**

Monument Type: Berntsen Top Security Rod Monument with a 2-1/2" dia. domed survey cap and permanent magnet encased in a 6" dia. PVC pipe with a NGS style aluminum access cover.



This document was prepared by DCI and GBC for use by Mitchell County, Iowa.