

**Mitchell County, Iowa**  
Iowa North Zone (1401)  
Horiz. Datum: NAD83(1996)  
Vert. Datum: NAVD 1988  
US Survey Feet  
**2006**

Point Name: **630**

**Designation:** 2005-630 Mitchell Co GPS Control Point

Northing: **3952935.38sft** Easting: **5110027.22sft**

Orthometric Height: **1195.33sft** Ellipsoid Height: **1096.93sft** **Geoid03**

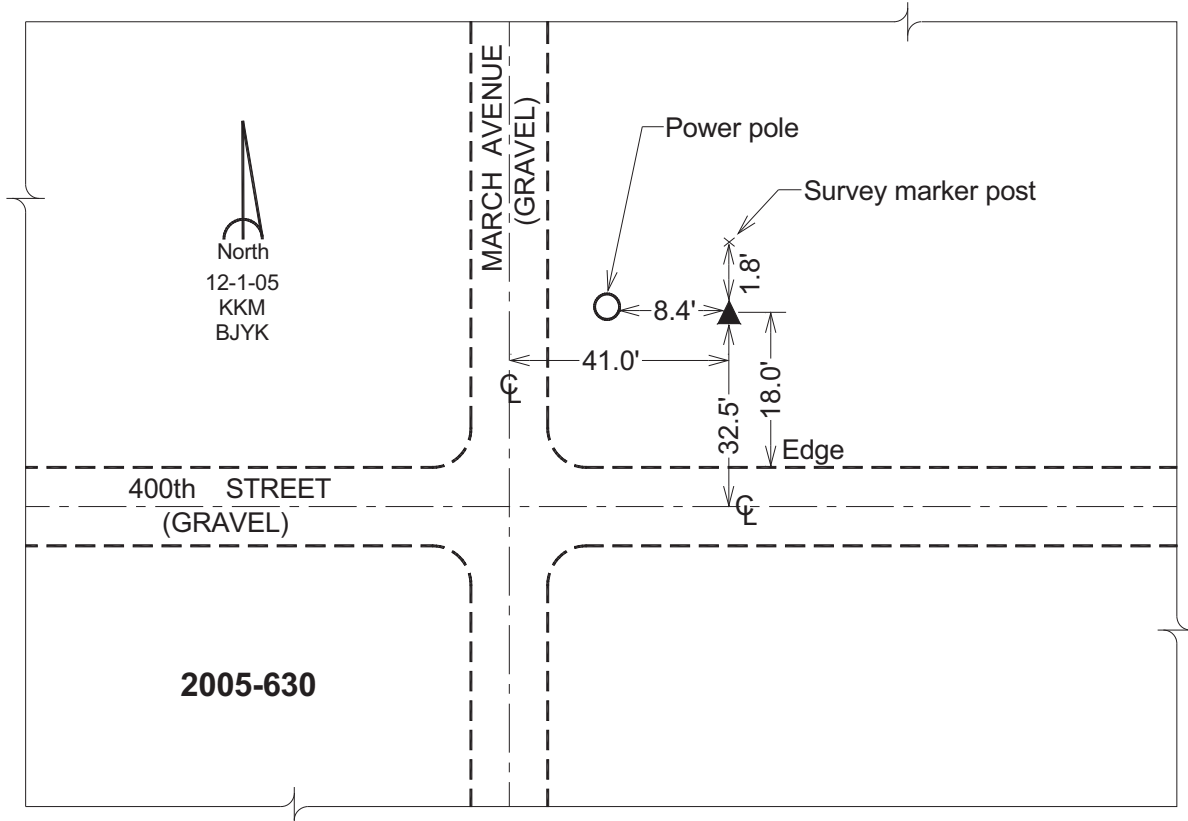
Latitude: **43°20'31.33283"N**

Longitude: **92°47'25.45079"W**

Mapping Angle: **0°28'51"**

Combination Scale Factor: **0.99996231**

**Monument Type:** Berntsen Top Security Rod Monument with a 2-1/2" dia. domed survey cap and permanent magnet encased in a 6" dia. PVC pipe with a NGS style aluminum access cover.



*This document was prepared by DCI and GBC for use by Mitchell County, Iowa.*