

**Mitchell County, Iowa**  
Iowa North Zone (1401)  
Horiz. Datum: NAD83(1996)  
Vert. Datum: NAVD 1988  
US Survey Feet  
**2006**

Point Name: **631**

**Designation:** 2005-631 Mitchell Co GPS Control Point

Northing: **3968849.75sft** Easting: **5109872.63sft**

Orthometric Height: **1230.10sft** Ellipsoid Height: **1132.19sft** **Geoid03**

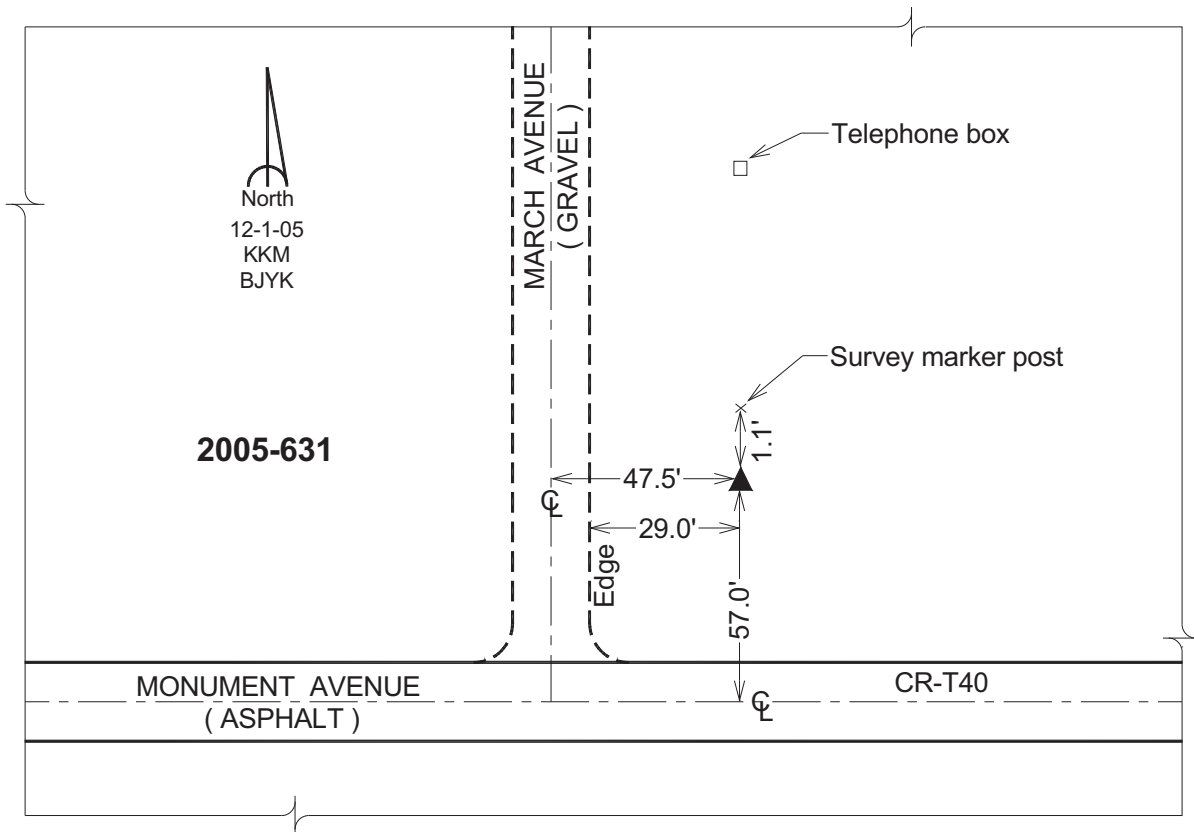
Latitude: **43°23'08.51600"N**

Longitude: **92°47'25.73522"W**

Mapping Angle: **0°28'51"**

Combination Scale Factor: **0.99996990**

**Monument Type:** Berntsen Top Security Rod Monument with a 2-1/2" dia. domed survey cap and permanent magnet encased in a 6" dia. PVC pipe with a NGS style aluminum access cover.



*This document was prepared by DCI and GBC for use by Mitchell County, Iowa.*