

**Mitchell County, Iowa**  
Iowa North Zone (1401)  
Horiz. Datum: NAD83(1996)  
Vert. Datum: NAVD 1988  
US Survey Feet  
**2006**

Point Name: **632**

**Designation:** 2005-632 Mitchell Co GPS Control Point

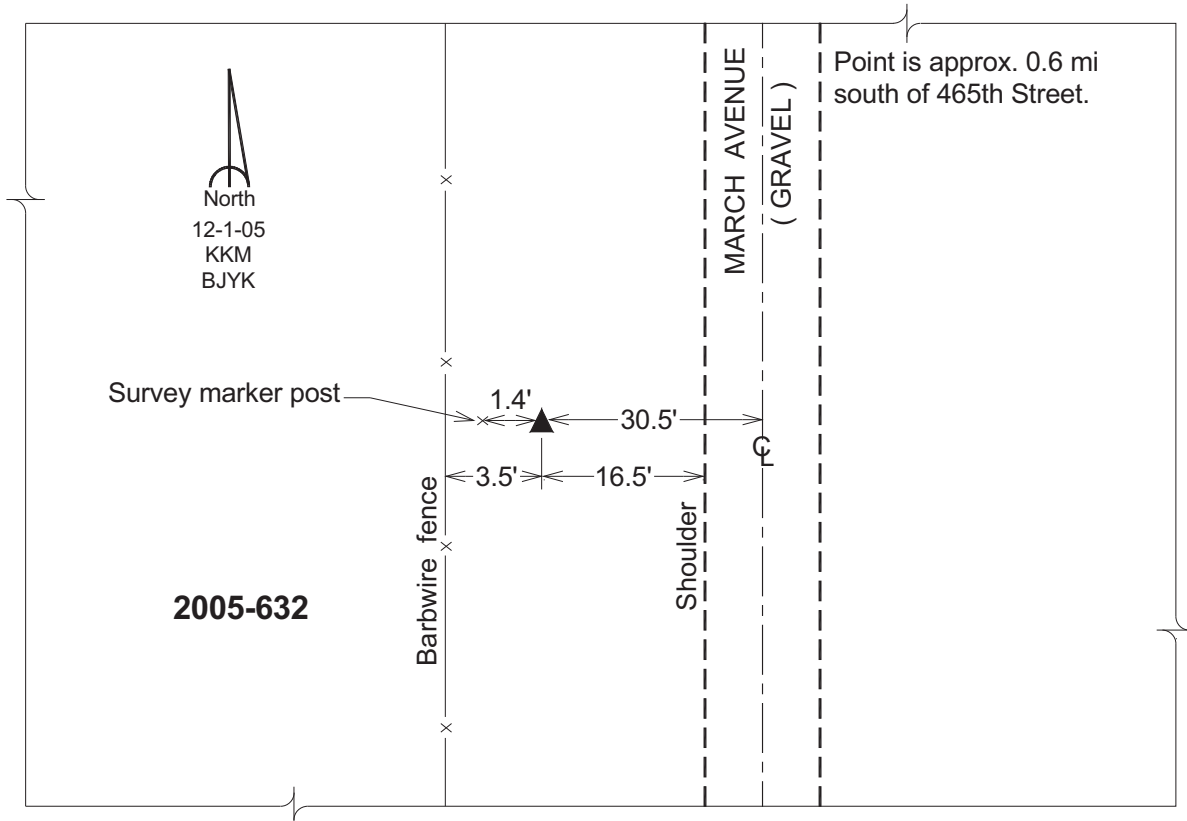
Northing: **3983803.90sft** Easting: **5109714.40sft**

Orthometric Height: **1256.33sft** Ellipsoid Height: **1158.83sft** **Geoid03**

Latitude: **43°25'36.21393"N** Longitude: **92°47'26.17863"W**

Mapping Angle: **0°28'51"** Combination Scale Factor: **0.99997789**

**Monument Type:** Berntsen Top Security Rod Monument with a 2-1/2" dia. domed survey cap and permanent magnet encased in a 6" dia. PVC pipe with a NGS style aluminum access cover.



*This document was prepared by DCI and GBC for use by Mitchell County, Iowa.*