

Mitchell County, Iowa
 Iowa North Zone (1401)
 Horiz. Datum: NAD83(1996)
 Vert. Datum: NAVD 1988
 US Survey Feet
2006

Point Name: **635**

Designation: 2005-635 Mitchell Co GPS Control Point

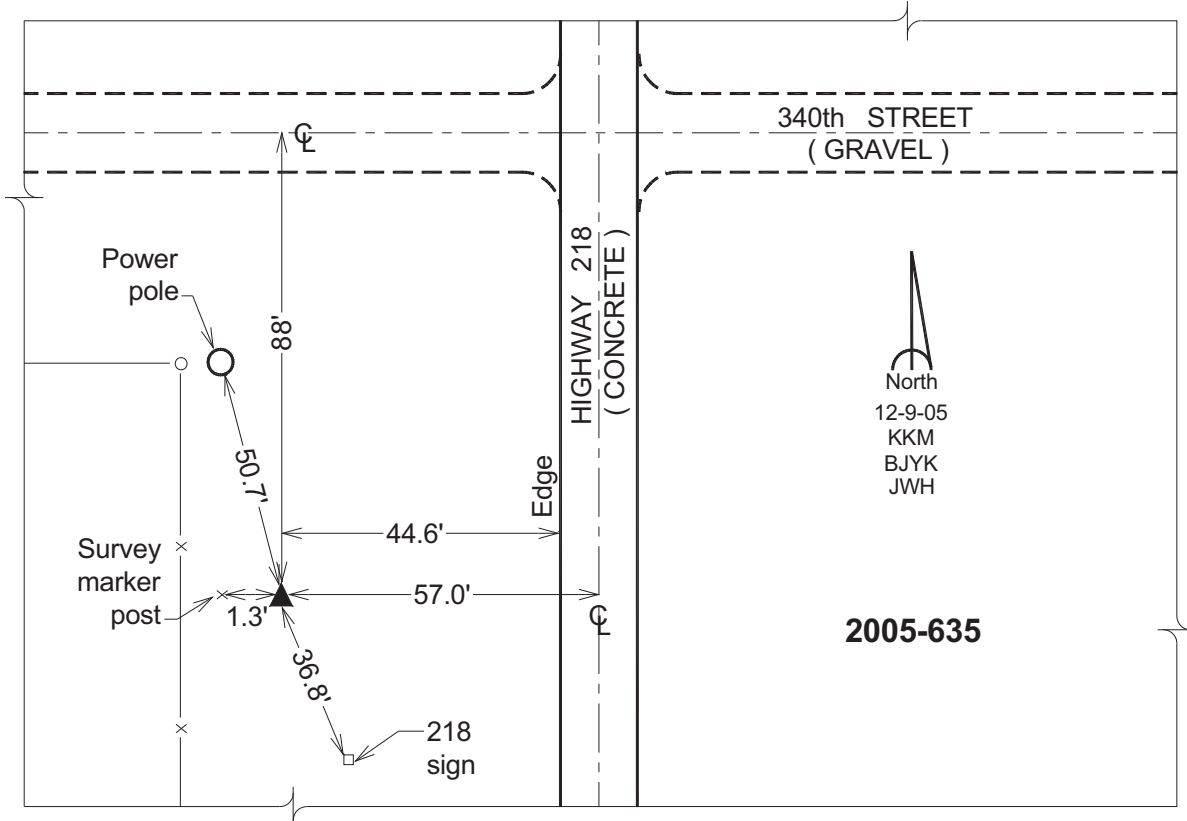
Northing: **3921375.36sft** Easting: **5125758.85sft**

Orthometric Height: **1164.48sft** Ellipsoid Height: **1064.64sft** **Geoid03**

Latitude: **43°15'18.28162"N** Longitude: **92°43'56.45829"W**

Mapping Angle: **0°31'13"** Combination Scale Factor: **0.99994711**

Monument Type: Berntsen Top Security Rod Monument with a 2-1/2" dia. domed survey cap and permanent magnet encased in a 6" dia. PVC pipe with a NGS style aluminum access cover.



This document was prepared by DCI and GBC for use by Mitchell County, Iowa.