

Mitchell County, Iowa
Iowa North Zone (1401)
Horiz. Datum: NAD83(1996)
Vert. Datum: NAVD 1988
US Survey Feet
2006

Point Name: **637**

Designation: 2005-637 Mitchell Co GPS Control Point

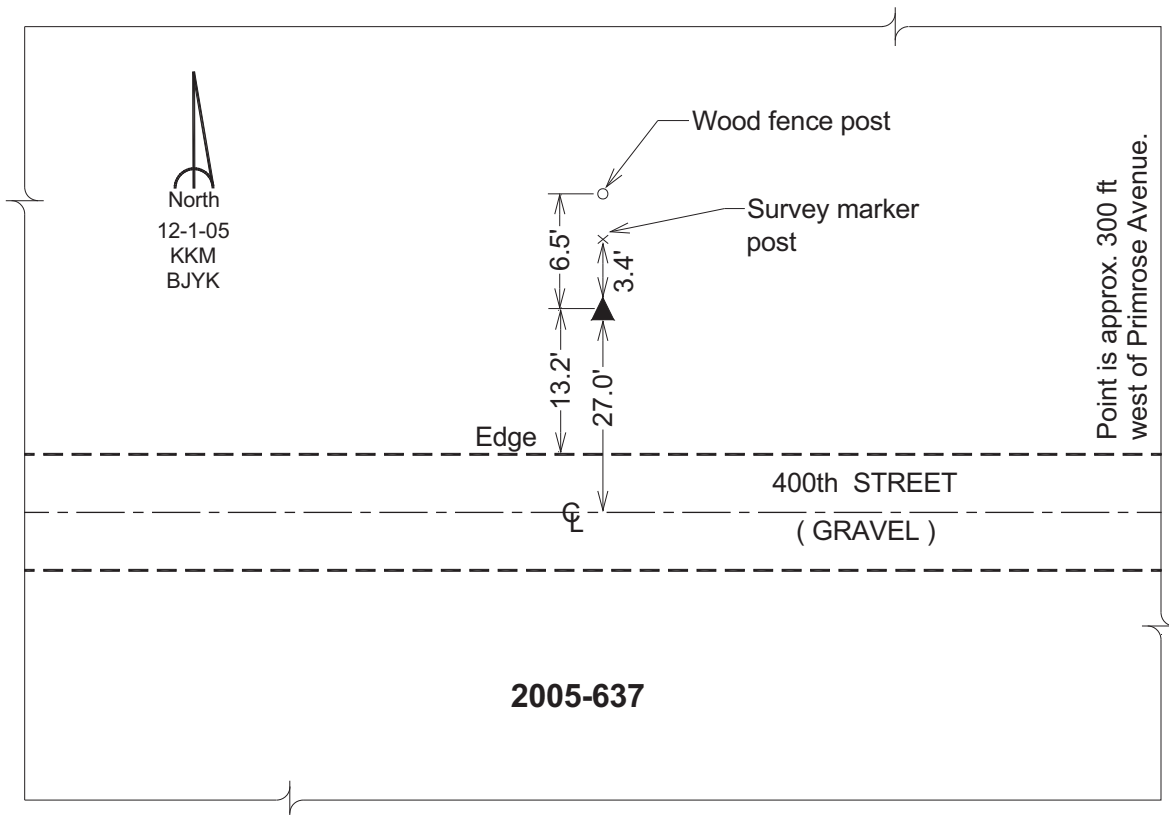
Northing: **3953061.28**sft Easting: **5125108.02**sft

Orthometric Height: **1195.47**sft Ellipsoid Height: **1096.58**sft **Geoid03**

Latitude: **43°20'31.27607"N** Longitude: **92°44'01.37154"W**

Mapping Angle: **0°31'10"** Combination Scale Factor: **0.99996232**

Monument Type: Berntsen Top Security Rod Monument with a 2-1/2" dia. domed survey cap and permanent magnet encased in a 6" dia. PVC pipe with a NGS style aluminum access cover.



This document was prepared by DCI and GBC for use by Mitchell County, Iowa.