

**Mitchell County, Iowa**  
Iowa North Zone (1401)  
Horiz. Datum: NAD83(1996)  
Vert. Datum: NAVD 1988  
US Survey Feet  
**2006**

Point Name: **638**

**Designation:** 2005-638 Mitchell Co GPS Control Point

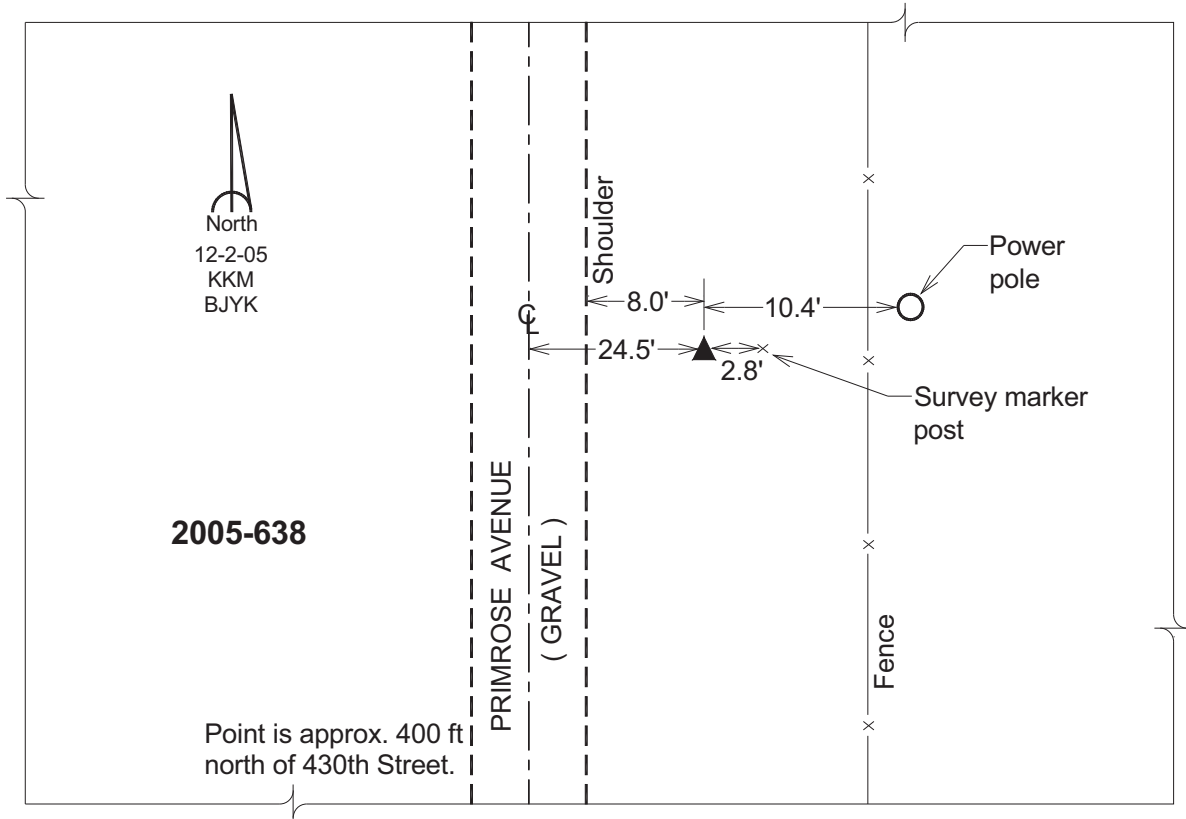
Northing: **3969281.52sft** Easting: **5124867.92sft**

Orthometric Height: **1204.58sft** Ellipsoid Height: **1106.20sft** **Geoid03**

Latitude: **43°23'11.48775"N** Longitude: **92°44'02.63182"W**

Mapping Angle: **0°31'09"** Combination Scale Factor: **0.99997133**

**Monument Type:** Berntsen Top Security Rod Monument with a 2-1/2" dia. domed survey cap and permanent magnet encased in a 6" dia. PVC pipe with a NGS style aluminum access cover.



*This document was prepared by DCI and GBC for use by Mitchell County, Iowa.*