

Mitchell County, Iowa
Iowa North Zone (1401)
Horiz. Datum: NAD83(1996)
Vert. Datum: NAVD 1988
US Survey Feet
2006

Point Name: **639**

Designation: 2005-639 Mitchell Co GPS Control Point

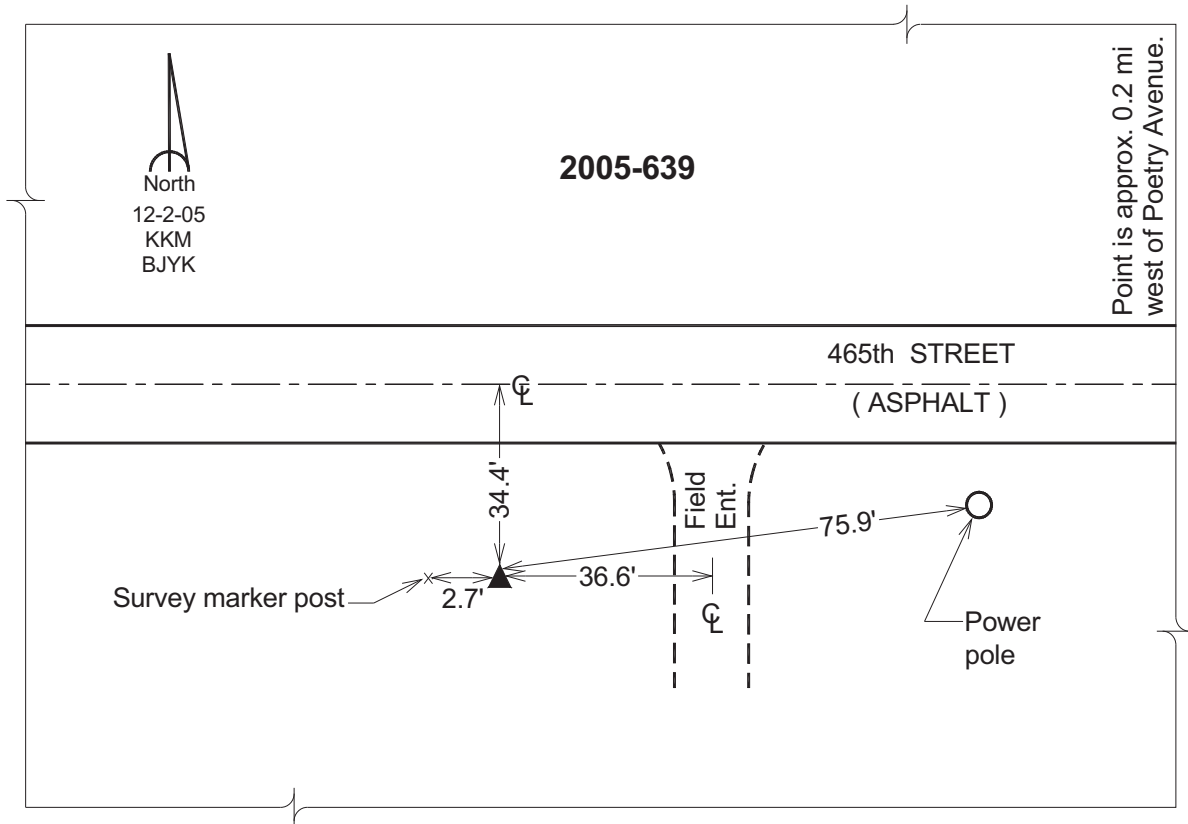
Northing: **3987310.07**sft Easting: **5126481.01**sft

Orthometric Height: **1240.27**sft Ellipsoid Height: **1142.36**sft **Geoid03**

Latitude: **43°26'09.38836"N** Longitude: **92°43'38.55760"W**

Mapping Angle: **0°31'25"** Combination Scale Factor: **0.99998082**

Monument Type: Berntsen Top Security Rod Monument with a 2-1/2" dia. domed survey cap and permanent magnet encased in a 6" dia. PVC pipe with a NGS style aluminum access cover.



This document was prepared by DCI and GBC for use by Mitchell County, Iowa.