

Mitchell County, Iowa
Iowa North Zone (1401)
Horiz. Datum: NAD83(1996)
Vert. Datum: NAVD 1988
US Survey Feet
2006

Point Name: **641**

Designation: 2005-641 Mitchell Co GPS Control Point

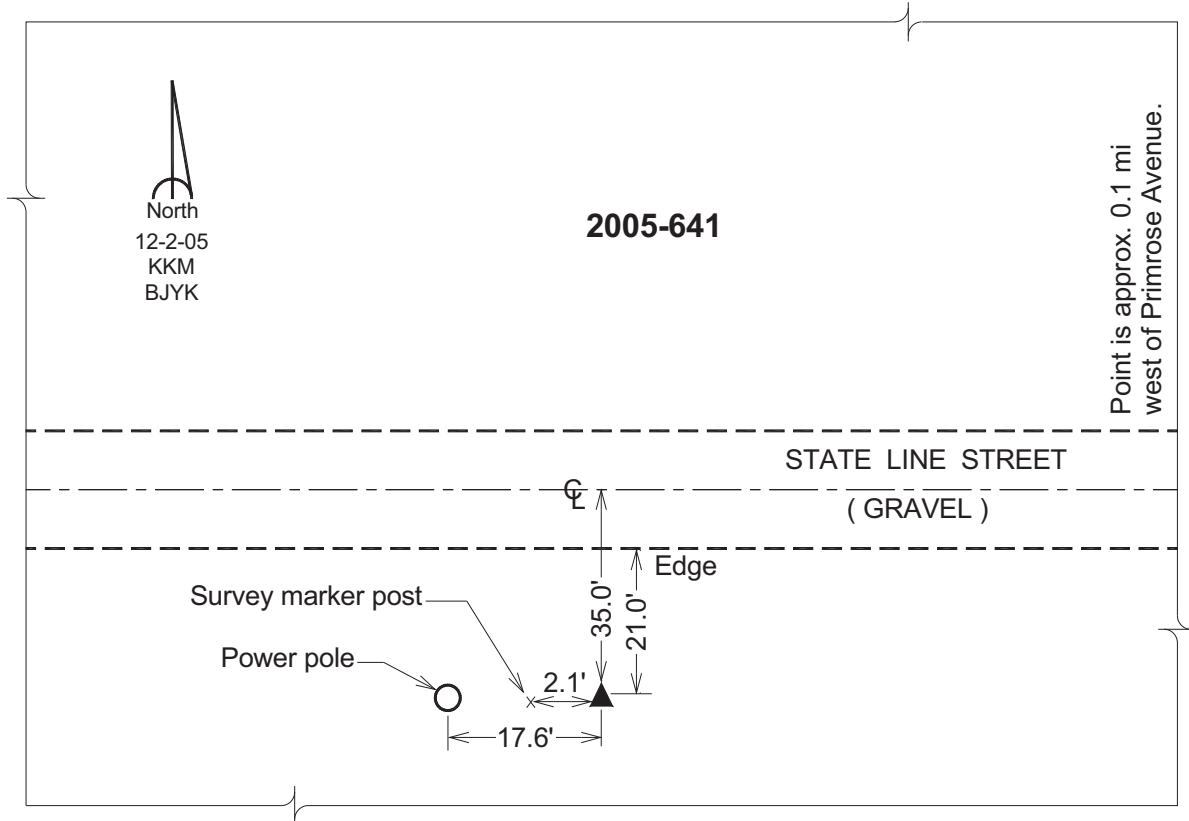
Northing: **4010622.08sft** Easting: **5124375.22sft**

Orthometric Height: **1251.12sft** Ellipsoid Height: **1153.81sft** **Geoid03**

Latitude: **43°29'59.79598"N** Longitude: **92°44'04.23450"W**

Mapping Angle: **0°31'08"** Combination Scale Factor: **0.99999593**

Monument Type: Berntsen Top Security Rod Monument with a 2-1/2" dia. domed survey cap and permanent magnet encased in a 6" dia. PVC pipe with a NGS style aluminum access cover.



This document was prepared by DCI and GBC for use by Mitchell County, Iowa.