

Mitchell County, Iowa  
Iowa North Zone (1401)  
Horiz. Datum: NAD83(1996)  
Vert. Datum: NAVD 1988  
US Survey Feet  
**2006**

Point Name: **643**

**Designation:** 2005-643 Mitchell Co GPS Control Point

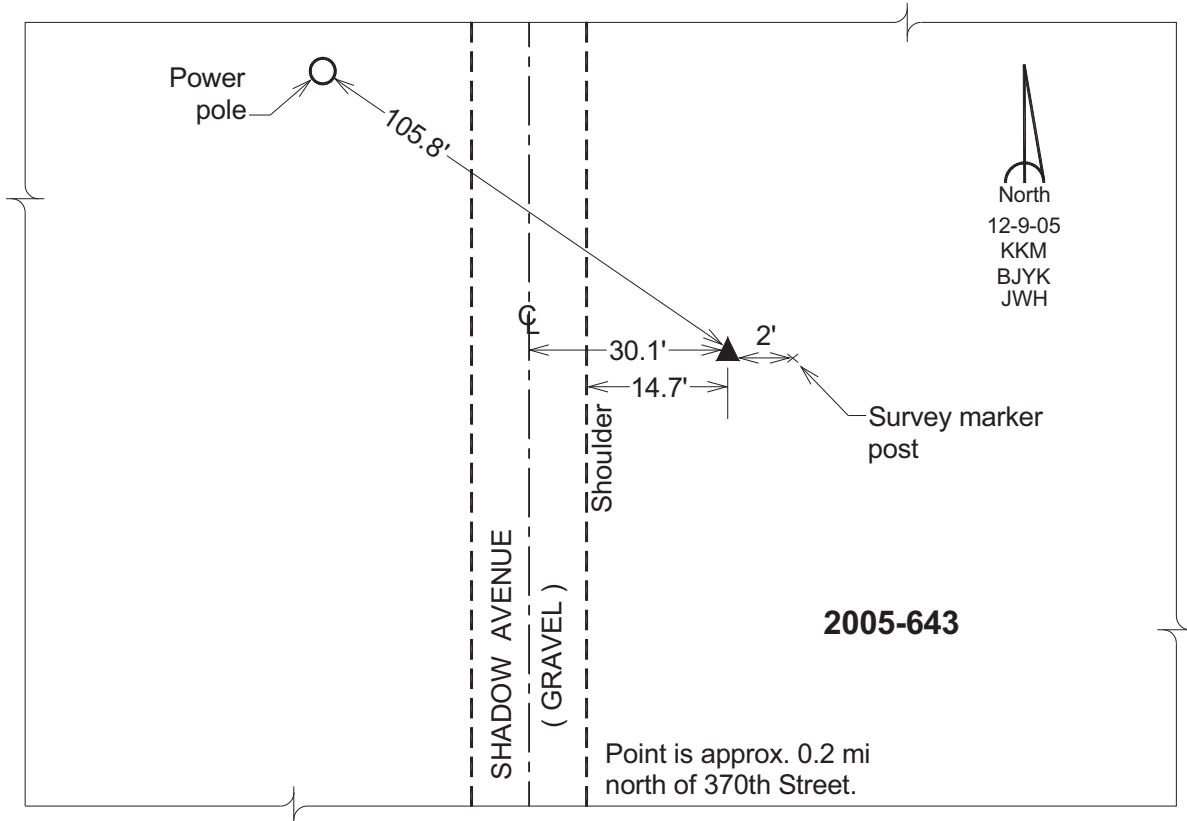
Northing: **3938467.99sft** Easting: **5138937.05sft**

Orthometric Height: **1163.71sft** Ellipsoid Height: **1064.06sft** **Geoid03**

Latitude: **43°18'05.87205"N** Longitude: **92°40'56.15703"W**

Mapping Angle: **0°33'15"** Combination Scale Factor: **0.99995581**

**Monument Type:** Berntsen Top Security Rod Monument with a 2-1/2" dia. domed survey cap and permanent magnet encased in a 6" dia. PVC pipe with a NGS style aluminum access cover.



*This document was prepared by DCI and GBC for use by Mitchell County, Iowa.*