

Mitchell County, Iowa
Iowa North Zone (1401)
Horiz. Datum: NAD83(1996)
Vert. Datum: NAVD 1988
US Survey Feet
2006

Point Name: **644**

Designation: 2005-644 Mitchell Co GPS Control Point

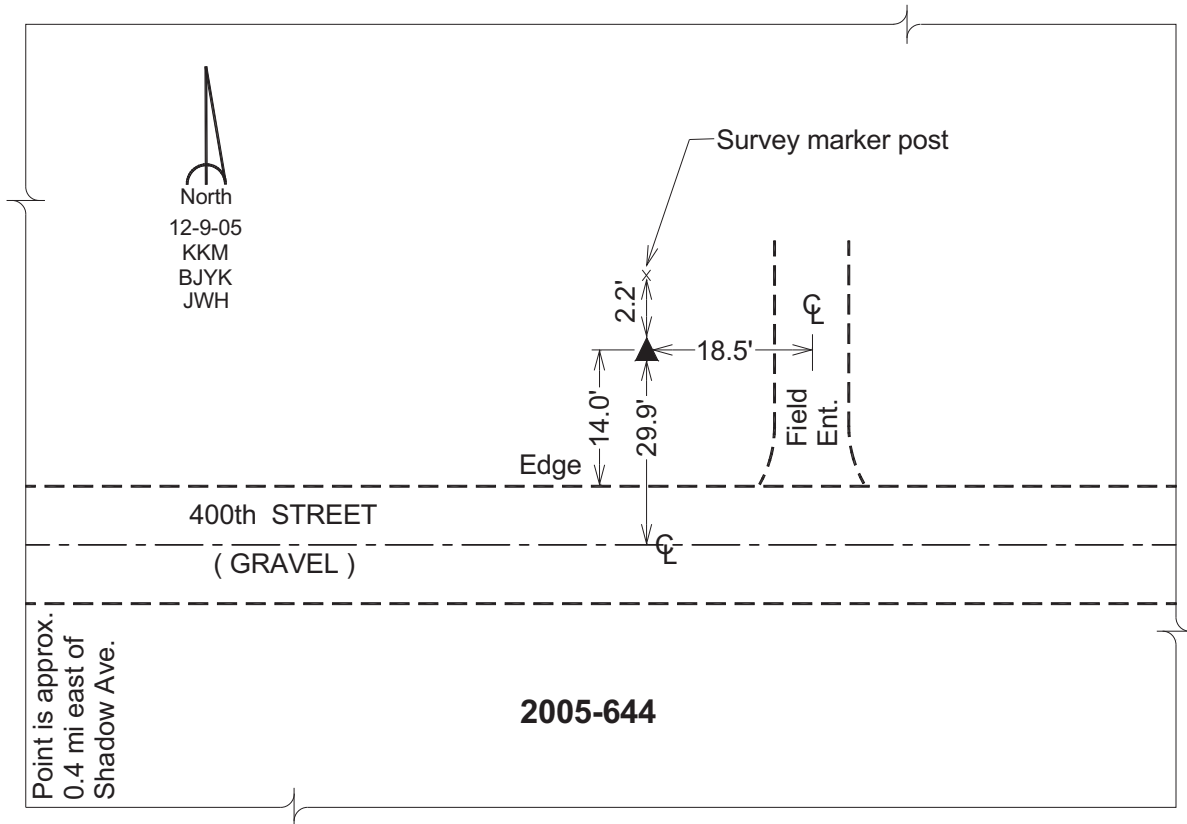
Northing: **3953296.65**sft Easting: **5142308.47**sft

Orthometric Height: **1162.44**sft Ellipsoid Height: **1063.15**sft **Geoid03**

Latitude: **43°20'31.99576"N** Longitude: **92°40'08.59625"W**

Mapping Angle: **0°33'47"** Combination Scale Factor: **0.99996396**

Monument Type: Berntsen Top Security Rod Monument with a 2-1/2" dia. domed survey cap and permanent magnet encased in a 6" dia. PVC pipe with a NGS style aluminum access cover.



This document was prepared by DCI and GBC for use by Mitchell County, Iowa.