

Mitchell County, Iowa
 Iowa North Zone (1401)
 Horiz. Datum: NAD83(1996)
 Vert. Datum: NAVD 1988
 US Survey Feet
2006

Point Name: **651**

Designation: 2005-651 Mitchell Co GPS Control Point

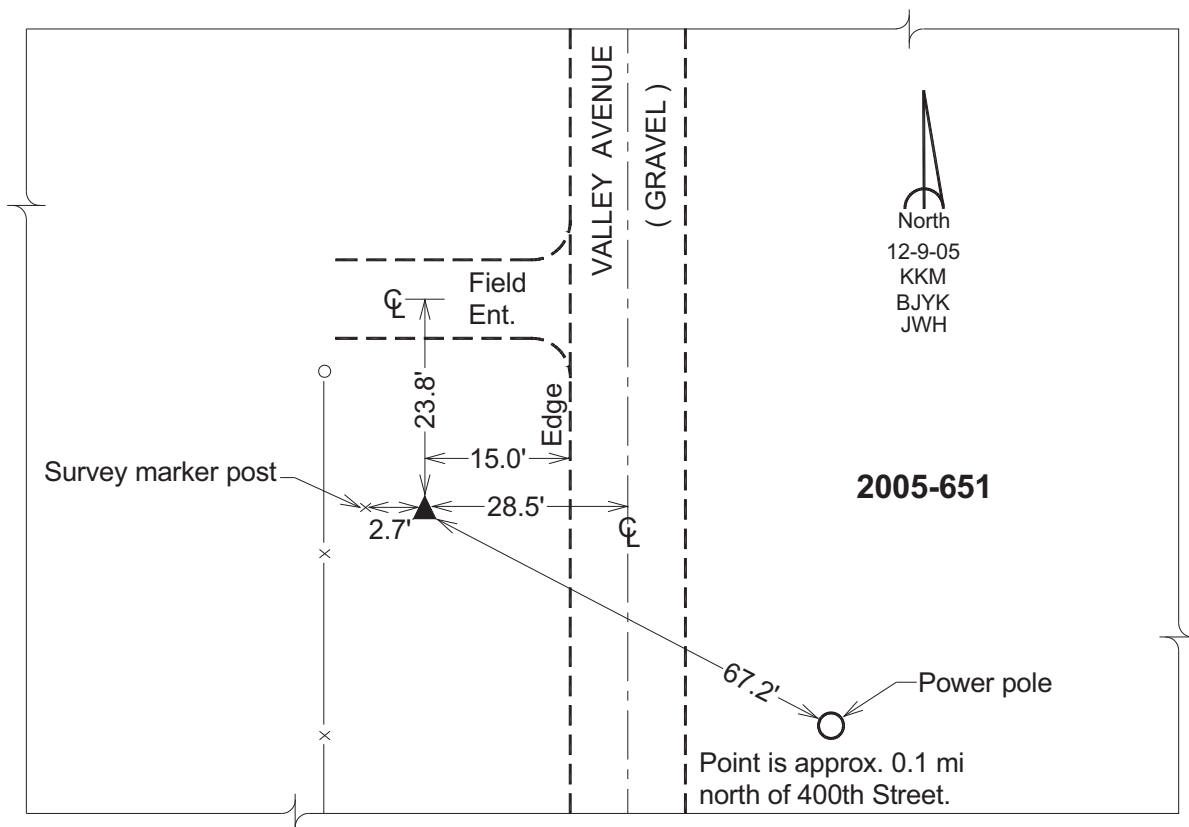
Northing: **3953829.91sft** Easting: **5156967.26sft**

Orthometric Height: **1203.90sft** Ellipsoid Height: **1104.40sft** **Geoid03**

Latitude: **43°20'35.79203"N** Longitude: **92°36'50.16931"W**

Mapping Angle: **0°36'02"** Combination Scale Factor: **0.99996221**

Monument Type: Berntsen Top Security Rod Monument with a 2-1/2" dia. domed survey cap and permanent magnet encased in a 6" dia. PVC pipe with a NGS style aluminum access cover.



This document was prepared by DCI and GBC for use by Mitchell County, Iowa.