

Mitchell County, Iowa
Iowa North Zone (1401)
Horiz. Datum: NAD83(1996)
Vert. Datum: NAVD 1988
US Survey Feet
2006

Point Name: **655**

Designation: 2005-655 Mitchell Co GPS Control Point

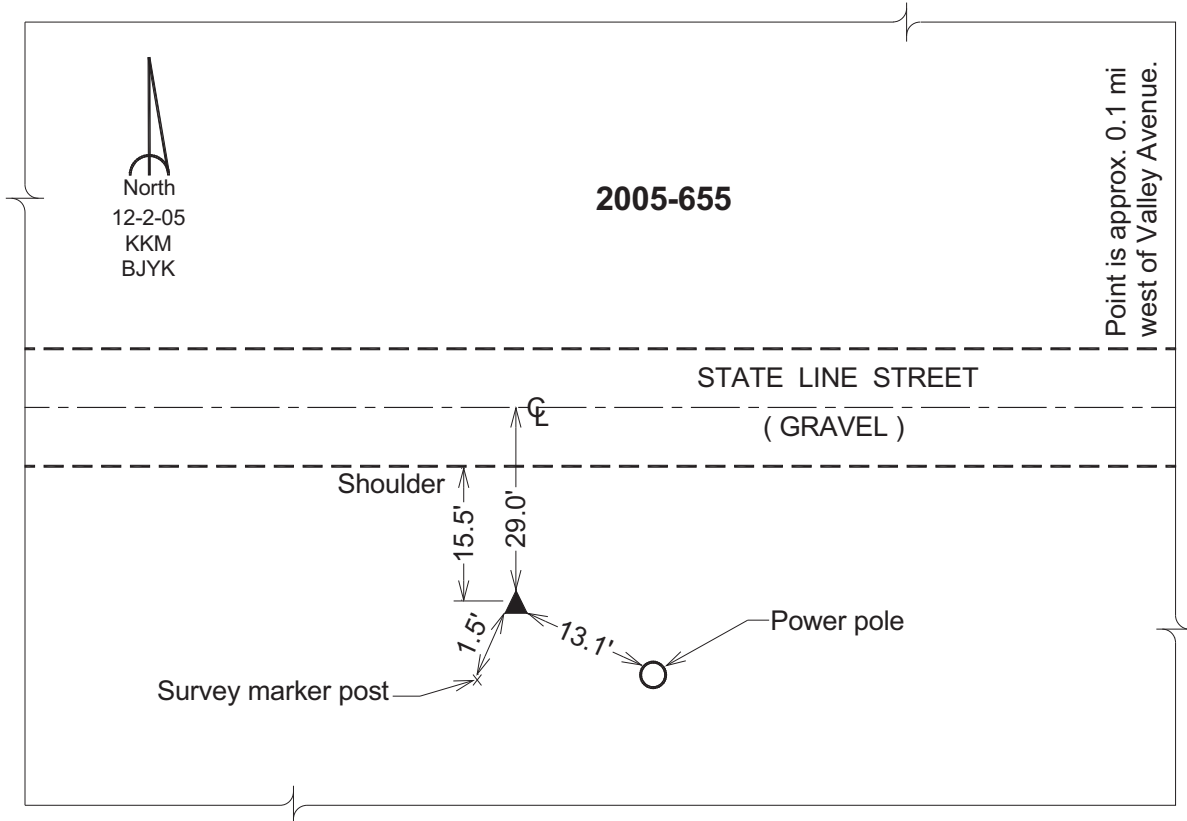
Northing: **4010988.97sft** Easting: **5155908.20sft**

Orthometric Height: **1336.43sft** Ellipsoid Height: **1238.54sft** **Geoid03**

Latitude: **43°30'00.38054"N** Longitude: **92°36'56.40894"W**

Mapping Angle: **0°35'58"** Combination Scale Factor: **0.99999192**

Monument Type: Berntsen Top Security Rod Monument with a 2-1/2" dia. domed survey cap and permanent magnet encased in a 6" dia. PVC pipe with a NGS style aluminum access cover.



This document was prepared by DCI and GBC for use by Mitchell County, Iowa.