

**Mitchell County, Iowa**  
Iowa North Zone (1401)  
Horiz. Datum: NAD83(1996)  
Vert. Datum: NAVD 1988  
US Survey Feet  
**2006**

Point Name: **656**

**Designation:** 2005-656 Mitchell Co GPS Control Point

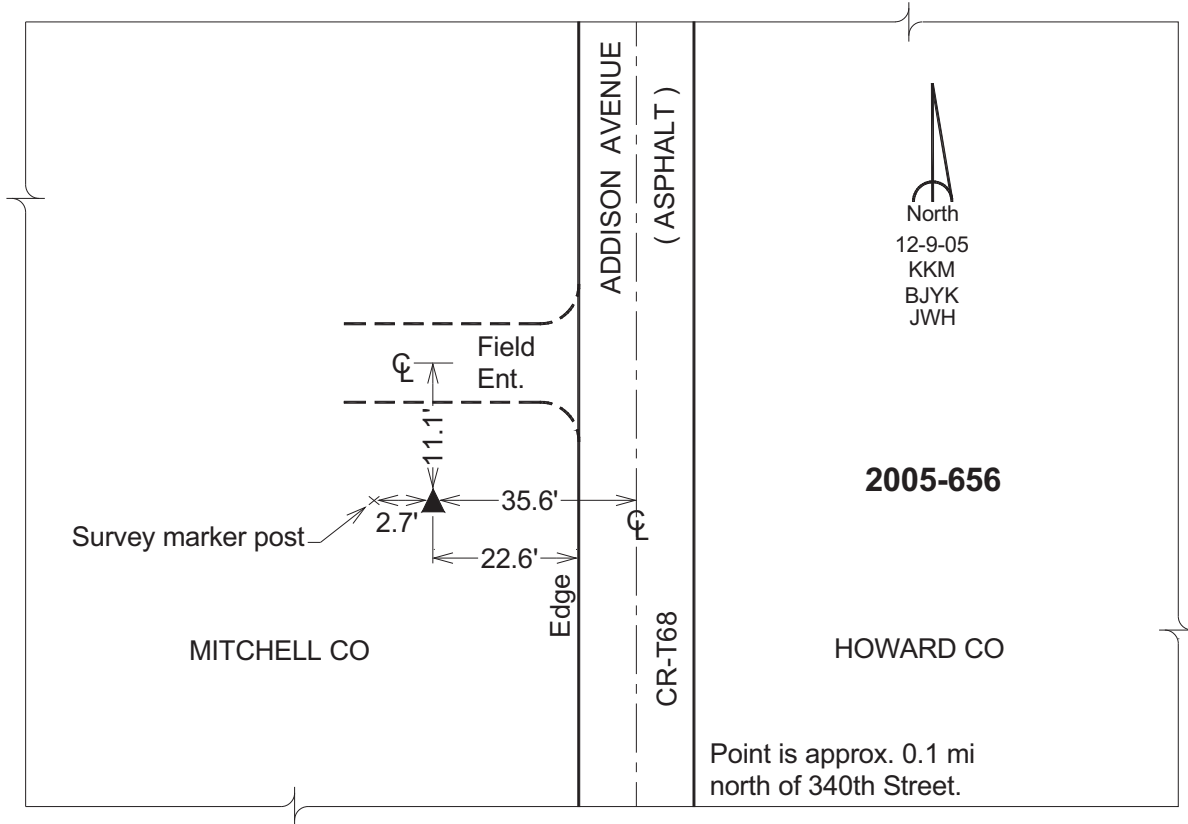
Northing: **3922485.50sft** Easting: **5173105.32sft**

Orthometric Height: **1185.42sft** Ellipsoid Height: **1085.02sft** **Geoid03**

Latitude: **43°15'24.50782"N** Longitude: **92°33'16.54283"W**

Mapping Angle: **0°38'27"** Combination Scale Factor: **0.99994645**

**Monument Type:** Berntsen Top Security Rod Monument with a 2-1/2" dia. domed survey cap and permanent magnet encased in a 6" dia. PVC pipe with a NGS style aluminum access cover.



*This document was prepared by DCI and GBC for use by Mitchell County, Iowa.*