

Mitchell County, Iowa
Iowa North Zone (1401)
Horiz. Datum: NAD83(1996)
Vert. Datum: NAVD 1988
US Survey Feet
2006

Point Name: **659**

Designation: 2005-659 Mitchell Co GPS Control Point

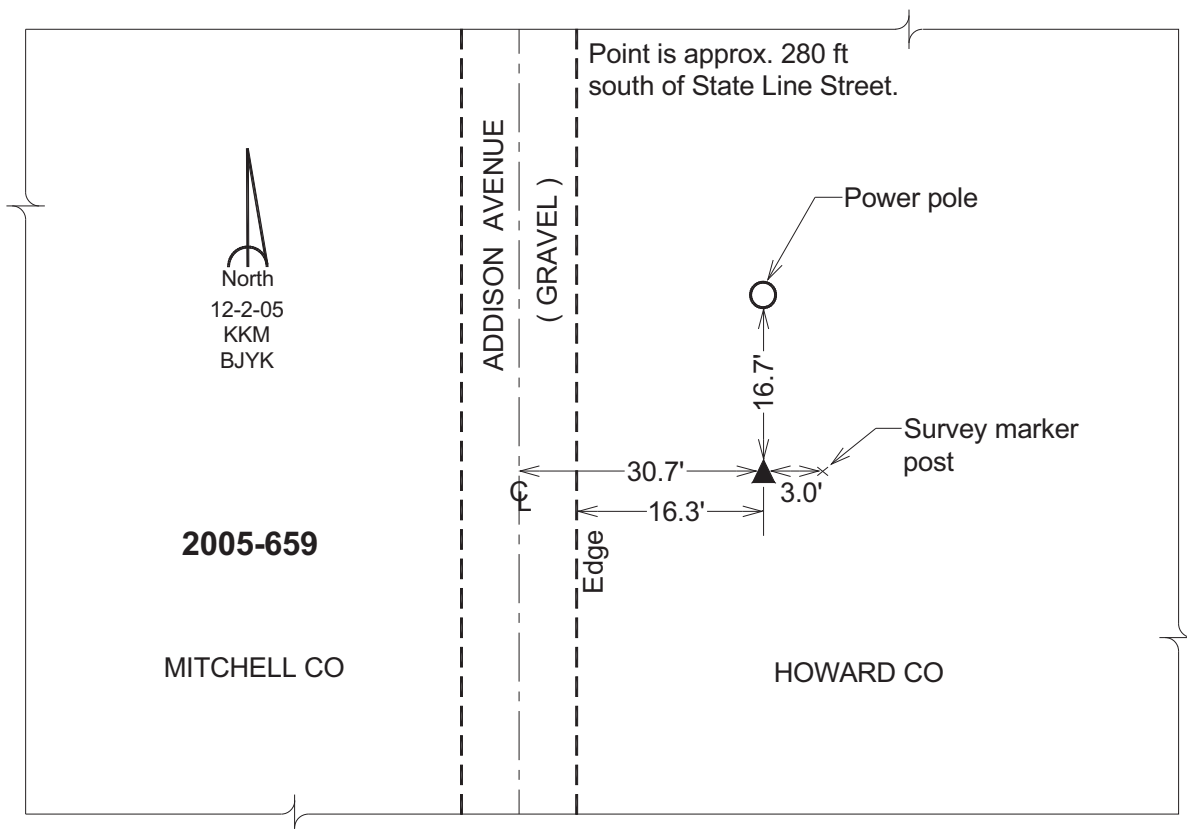
Northing: **4010873.12sft** Easting: **5172527.60sft**

Orthometric Height: **1326.10sft** Ellipsoid Height: **1227.96sft** **Geoid03**

Latitude: **43°29'57.45886"N** Longitude: **92°33'10.97054"W**

Mapping Angle: **0°38'30"** Combination Scale Factor: **0.99999222**

Monument Type: Berntsen Top Security Rod Monument with a 2-1/2" dia. domed survey cap and permanent magnet encased in a 6" dia. PVC pipe with a NGS style aluminum access cover.



This document was prepared by DCI and GBC for use by Mitchell County, Iowa.