

Mitchell County, Iowa
Iowa North Zone (1401)
Horiz. Datum: NAD83(1996)
Vert. Datum: NAVD 1988
US Survey Feet
2006

Point Name: 731

Designation: MnDOT horizontal and vertical control station #20568 Designation: KAUS MNDT

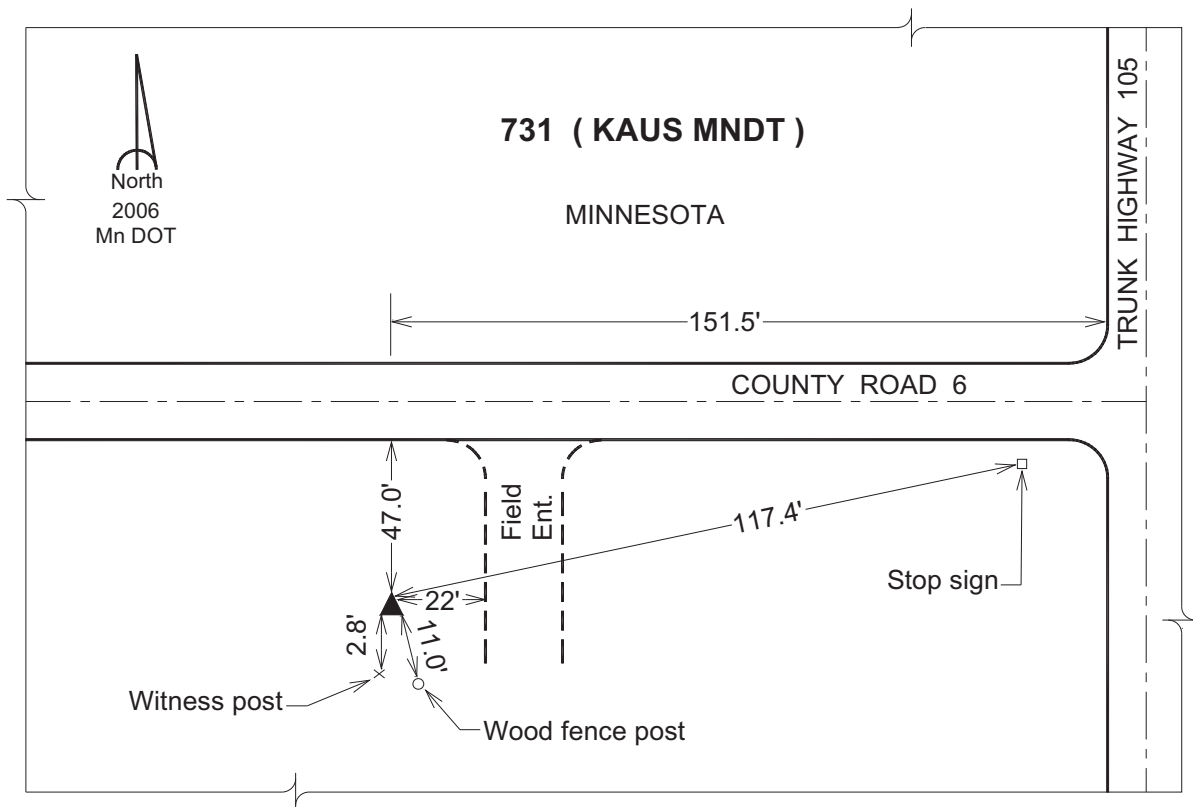
Northing: 4015241.84sft Easting: 5051202.10sft

Orthometric Height: 1158.56sft Ellipsoid Height: 1064.24sft Geoid03

Latitude: 43°30'50.78378"N Longitude: 93°00'36.57019"W

Mapping Angle: 0°19'55" Combination Scale Factor: 1.00000383

Monument Type: The station is punch mark on 24 feet long driven steel rod with access cover.



This document was prepared by DCI and GBC for use by Mitchell County, Iowa.