

Mitchell County, Iowa
Iowa North Zone (1401)
Horiz. Datum: NAD83(1996)
Vert. Datum: NAVD 1988
US Survey Feet
2006

Point Name: **732**

Designation: MnDOT horizontal and vertical control station #20669 Designation: WELL MNMT

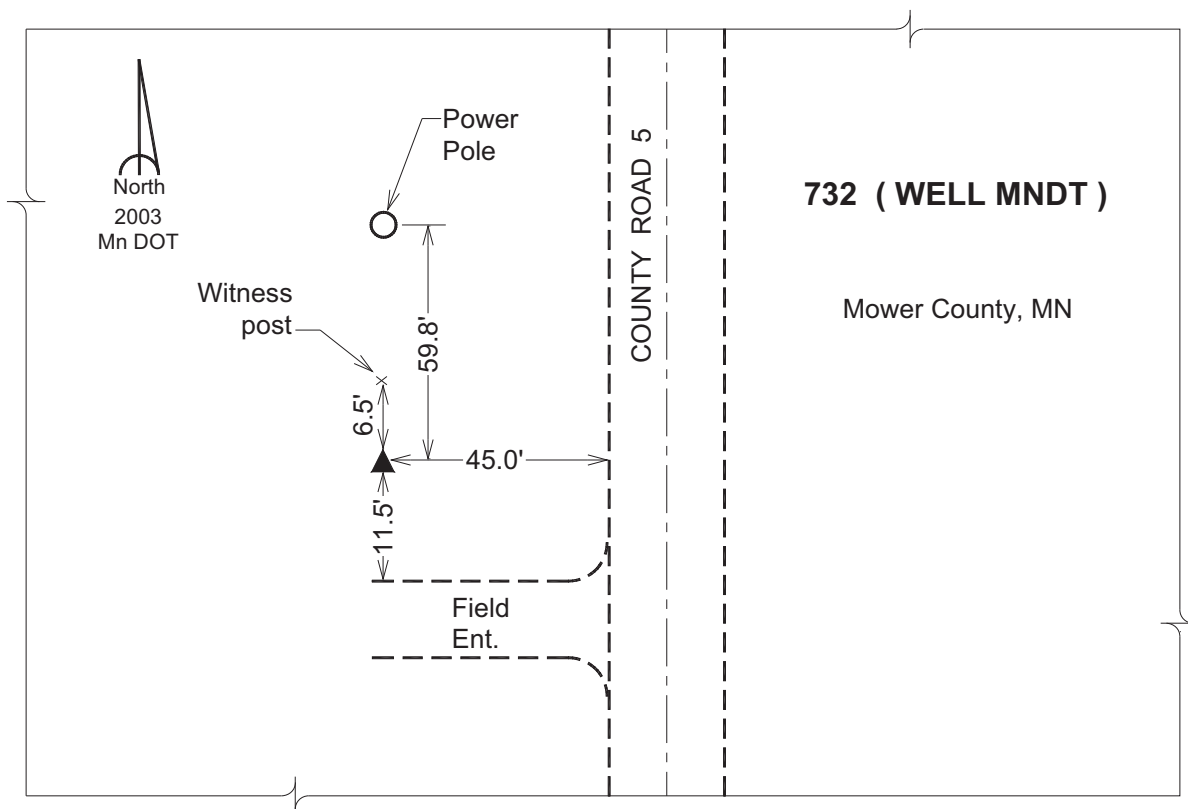
Northing: **4037514.57sft** Easting: **5114910.21sft**

Orthometric Height: **1308.20sft** Ellipsoid Height: **1211.48sft** **Geoid03**

Latitude: **43°34'26.19340"N** Longitude: **92°46'09.48470"W**

Mapping Angle: **0°29'43"** Combination Scale Factor: **1.00001284**

Monument Type: The station is a MnDOT horizontal control disk stamped "WELL 1991" on aluminum alloy rod with access cover (depth 15 ft).



This document was prepared by DCI and GBC for use by Mitchell County, Iowa.