

Mitchell County, Iowa
Iowa North Zone (1401)
Horiz. Datum: NAD83(1996)
Vert. Datum: NAVD 1988
US Survey Feet
2006

Point Name: 733

Designation: NGS 2nd Order vertical control station. PID:AE9461 Designation: 5005 AJ

Northing: 4019787.32sft Easting: 5173919.64sft

Orthometric Height: 1288.37sft Ellipsoid Height: 1190.33sft **Geoid03**

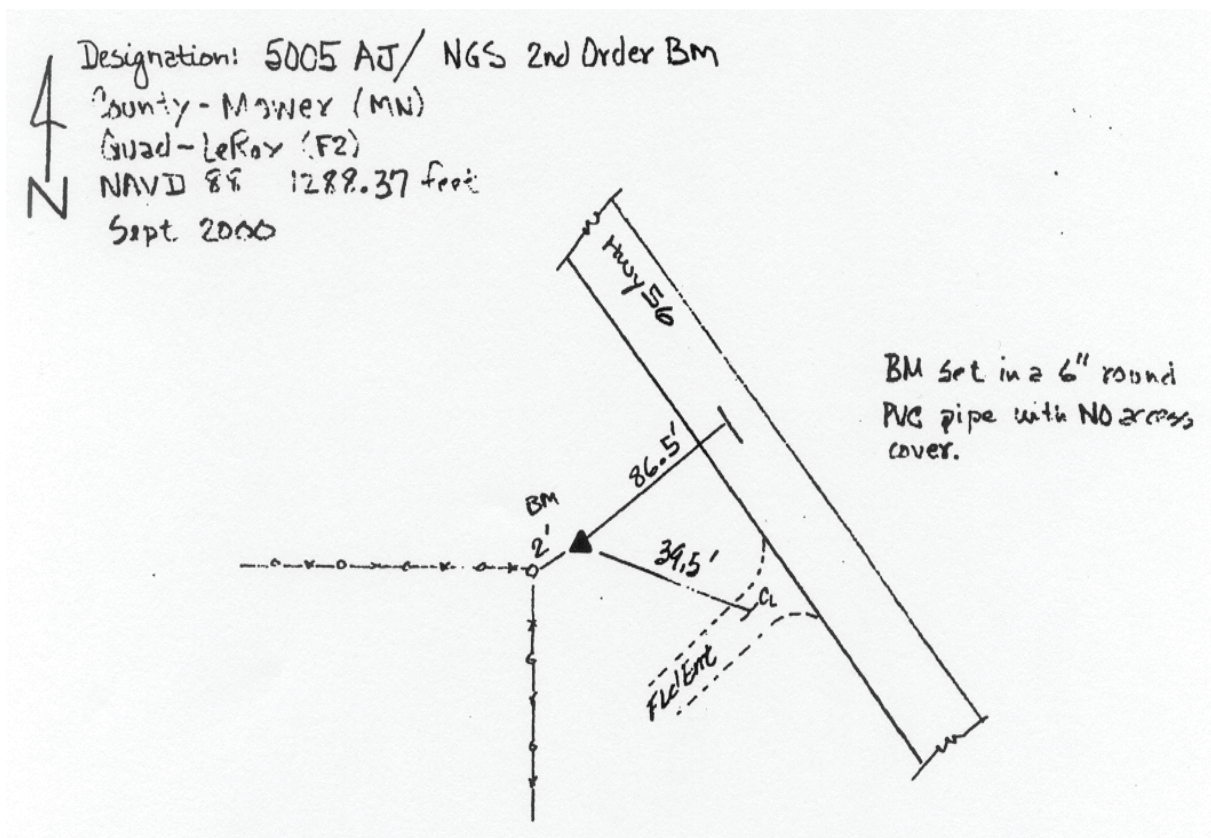
Latitude: 43°31'25.33326"N

Longitude: 92°32'50.72395"W

Mapping Angle: 0°38'44"

Combination Scale Factor: 1.00000031

Monument Type: Aluminum disk set on top of aluminum alloy rod encased in open 8" PVC pipe recessed 4" below ground.



This document was prepared by DCI and GBC for use by Mitchell County, Iowa.