

GPS SURVEY MARK DESCRIPTION

GIS MAPPING BY:
THE SIDWELL COMPANY
WEST CHICAGO, ILLINOIS

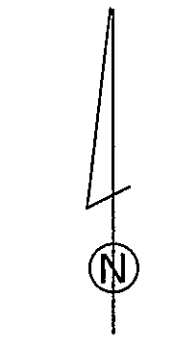
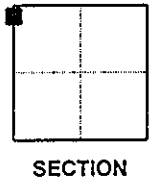
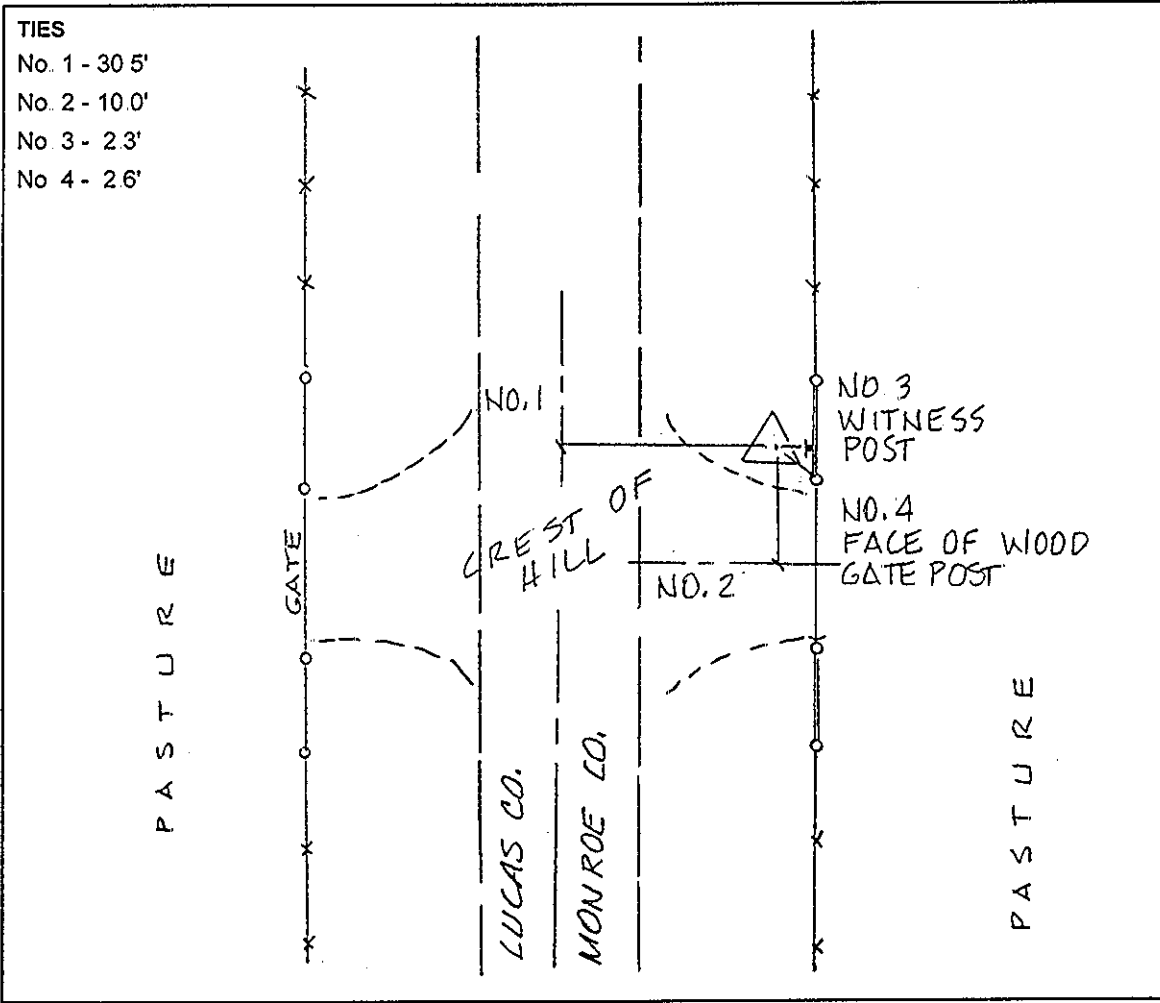
THE OFFICE OF THE
COUNTY ENGINEER
MONROE COUNTY, IOWA

DESIGNATION 721930 4 GPS No. 6006 COUNTY MONROE STATE IOWA
 LOCATED IN SECTION 30 TWP 72 N RGE 19 W USGS QUAD MAP WELLER
 TO REACH FROM THE INTERSECTION OF U.S. HIGHWAY 34 AND COUNTY ROAD S65, NORTHWEST OF MELROSE;
GO WEST 1.5 MILES ON HIGHWAY 34 TO GRAVEL ROAD AT LUCAS - MONROE COUNTY LINE; THEN NORTH
0.95 MILE TO MARK AT CREST OF HILL.

TYPE OF MARK 3-1/4" ALUMINUM DISK SET IN 12" DIAMETER POURED-IN-PLACE CONCRETE MONUMENT.
 RECOVERED SET BY DENI ASSOCIATES, INC., FT. MYERS, FL DATE OCTOBER 1996

HORIZONTAL VALUES ORIGINATED ON ORDER "B" IOWA HIGH ACCURACY REFERENCE NETWORK (HARN) CONTROL ESTABLISHED BY THE NATIONAL GEODETIC SURVEY AND BASED ON THE NORTH AMERICAN DATUM OF 1983, 1996 ADJUSTMENT.

IOWA COORDINATE SYSTEM, SOUTH ZONE GRID	SCALE FACTOR: <u>0.99995363</u>
COORDINATES (US FEET)	COORDINATES (METERS)
NORTHING (Y) <u>369887.21</u>	NORTHING (Y) <u>112741.846</u>
EASTING (X) <u>1751261.13</u>	EASTING (X) <u>533785.459</u>



SKETCH
BY DSW
DENI 9609001