

# GPS SURVEY MARK DESCRIPTION

GIS MAPPING BY:  
THE SIDWELL COMPANY  
WEST CHICAGO, ILLINOIS

THE OFFICE OF THE  
COUNTY ENGINEER  
MONROE COUNTY, IOWA

DESIGNATION 711906 4 GPS No. 6007 COUNTY MONROE STATE IOWA  
 LOCATED IN SECTION 6 TWP 71 N RGE 19 W USGS QUAD MAP MELROSE  
 TO REACH FROM THE INTERSECTION OF U.S. HIGHWAY 34 AND COUNTY ROAD S65, NORTHWEST OF MELROSE;  
GO WEST 1.5 MILES ON HIGHWAY 34 TO GRAVEL ROAD AT LUCAS - MONROE COUNTY LINE; THEN SOUTH  
1.0 MILE TO MARK.

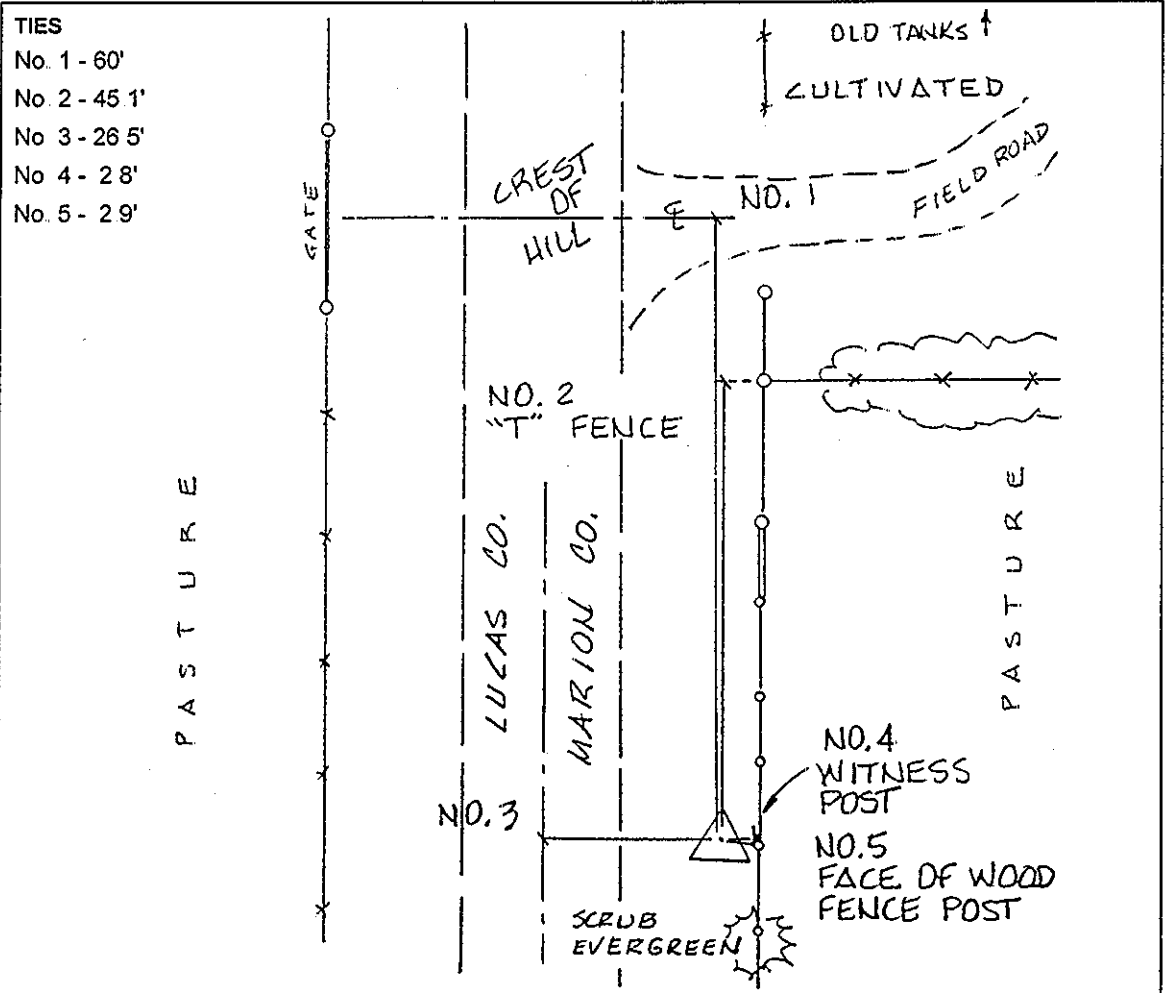
TYPE OF MARK 3-1/4" ALUMINUM DISK SET IN 12" DIAMETER POURED-IN-PLACE CONCRETE MONUMENT.

RECOVERED  SET BY DENI ASSOCIATES, INC., FT. MYERS, FL DATE OCTOBER 1996

HORIZONTAL VALUES ORIGINATED ON ORDER "B" IOWA HIGH ACCURACY REFERENCE NETWORK (HARN) CONTROL ESTABLISHED BY THE NATIONAL GEODETIC SURVEY AND BASED ON THE NORTH AMERICAN DATUM OF 1983, 1996 ADJUSTMENT.

IOWA COORDINATE SYSTEM, SOUTH ZONE GRID SCALE FACTOR: 0.99995534

COORDINATES (US FEET)	COORDINATES (METERS)
NORTHING (Y) <u>359636.38</u>	NORTHING (Y) <u>109617.387</u>
EASTING (X) <u>1751332.33</u>	EASTING (X) <u>533807.162</u>



SKETCH  
BY DSW  
DENI 9609001