

GPS SURVEY MARK DESCRIPTION

GIS MAPPING BY:
THE SIDWELL COMPANY
WEST CHICAGO, ILLINOIS

THE OFFICE OF THE
COUNTY ENGINEER
MONROE COUNTY, IOWA

DESIGNATION 721730 4 GPS No. 6032 COUNTY MONROE STATE IOWA

LOCATED IN SECTION 30 TWP 72 N RGE 17 W USGS QUAD MAP ALBIA

TO REACH FROM THE INTERSECTION OF U.S. HIGHWAY 34 AND COUNTY ROAD H35, 2.0 MILES WEST OF ALBIA;
GO SOUTHWESTERLY ON H35 FOR 0.5 MILE TO MARK.

TYPE OF MARK 3-1/4" ALUMINUM DISK SET IN 12" DIAMETER POURED-IN-PLACE CONCRETE MONUMENT.

RECOVERED SET BY DENI ASSOCIATES, INC., FT. MYERS, FL DATE OCTOBER 1996

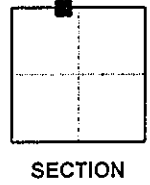
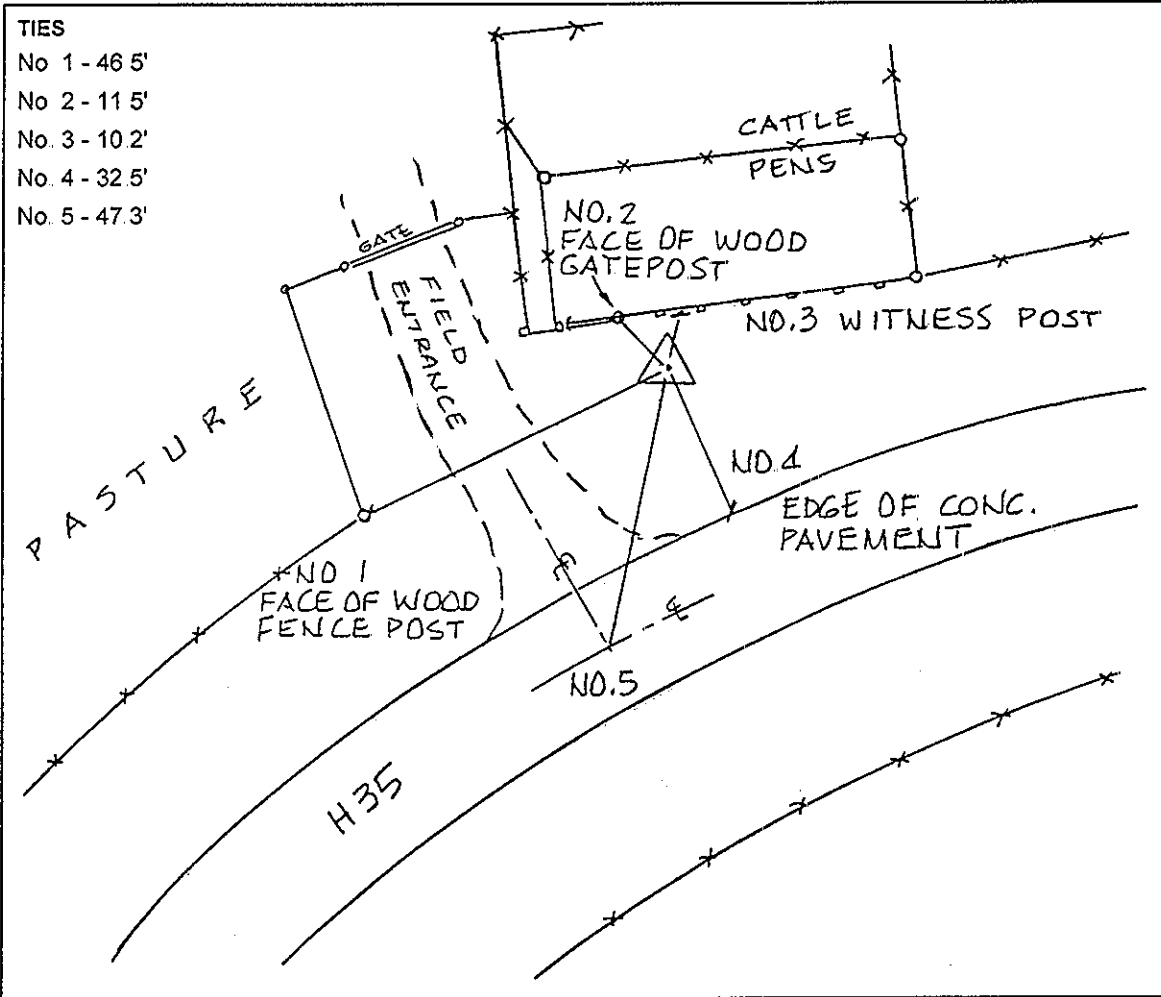
HORIZONTAL VALUES ORIGINATED ON ORDER "B" IOWA HIGH ACCURACY REFERENCE NETWORK (HARN) CONTROL ESTABLISHED BY THE NATIONAL GEODETIC SURVEY AND BASED ON THE NORTH AMERICAN DATUM OF 1983, 1996 ADJUSTMENT.

IOWA COORDINATE SYSTEM, SOUTH ZONE GRID SCALE FACTOR: 0.99995358

COORDINATES (US FEET) COORDINATES (METERS)

NORTHING (Y) 370620.12 NORTHING (Y) 112965.237

EASTING (X) 1816981.55 EASTING (X) 553817.084



SKETCH
BY DSW
DENI 9609001